

ETS Apps

Functional | Flexible | Tailormade

Apps make ETS even more versatile

Extra functions and more flexibility: customised ETS with Apps

There are Apps for iPhone, for smartphones, for tablets – and since the launch of ETS4 there have been Apps for ETS. In principle, the ETS Professional is sufficient for users wishing to install and configure KNX installations. Just as for mobile phones, users may however wish additional functionality when applying KNX. As not all can be part of the ETS basic functionality, ETS Apps are offered in the KNX Online Shop.

The world standard for home and building automation is used everywhere: In residential buildings, in all kinds of commercial buildings and even in large building complexes like airports. ETS is the most important tool for KNX projects. ETS provides everything that users need for configuration, commissioning and service. KNX users, who have familiarized themselves with the system, may need special functions, in order to work faster, safer and in a more controlled way. When developing ETS, KNX Association took into account and integrated many of the functions that had been demanded by the users. ETS offers everything that users need to configure and design a KNX project. Moreover, these functions can be easily found and operated. Therefore, it was only logical to offer any further extras for users as extensions. With the concept of the ETS Apps, KNX Association has found the perfect solution. ETS remains open for future wishes of users and technical developments.



ETS Apps make programming more easier

Compatibility is ensured

The first ETS Apps have been developed by KNX Association. KNX Members have also developed their own ETS Apps thanks to the provided API, which already includes many basic functions. This allows for nearly limitless creative ideas. However, compatibility of the entire system is maintained as all ETS Apps have to be validated by KNX Association and are amongst others available via the KNX Online Shop. The owners of ETS who wish additional functionality, only need to download, install and licence the ETS Apps to enjoy the extras.

Available ETS Apps by KNX Association

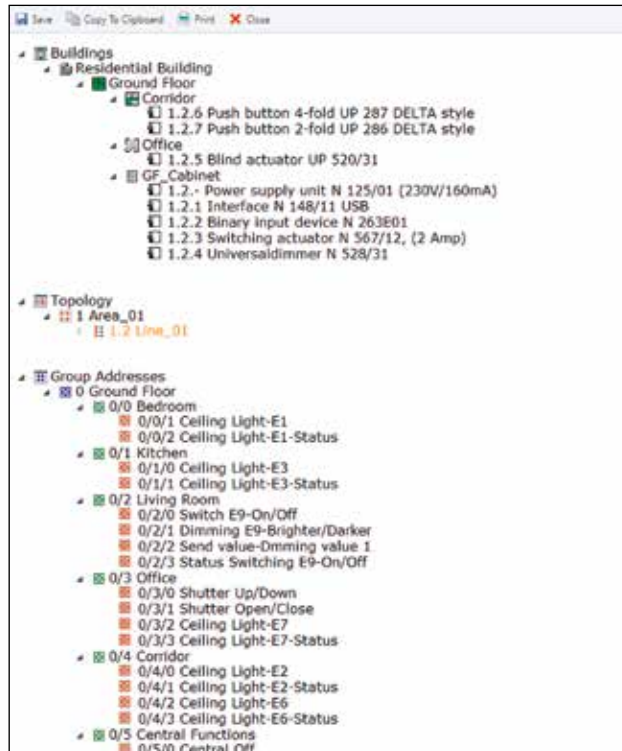
The ETS Apps developed by KNX Association as well as the ETS Apps that have been developed by the KNX Members can be found in the KNX Online Shop. KNX users who repeatedly edit the same room functions or building structures in their projects can use the ETS App “Extended Copy” and save a large amount of working time. Completed configurations are simply copied and adapted to additional parts of a building. Better team work with ETS is possible using the ETS App “Split & Merge”. It offers many advantages for a seamless co-operation when two or more KNX experts are simul-

taneously configuring different parts of a large project.

Already for a long time, technicians wished the useful functionality offered by the ETS App “Device Templates” and “Replace Device”. The first one can be used to save KNX device configurations in the database for later use in other projects (including all parameter settings). This saves a lot of duplicate work. The second ETS App supports service technicians, e.g. if an actuator has to be exchanged. Parameters of the old device are automatically taken over for the new one.

The ETS App “Labels” makes life easier, again for service

personnel: It allows consistent naming of devices so that technicians can keep the overview. The issue of unauthorised manipulations of the project software during the warranty period is now also a thing of the past: The ETS App “Project Tracing” allows tracking all third party manipulations. Another ETS App is the “Training Centre Tool”, an extension that allows the trainer to reset all devices of the practical training sites in one go when preparing the next training session. Two more ETS Apps for specialists who want to have a closer look inside the devices are the ETS App “Device Reader” and ETS App “Device Editor”, which allow the reading of the device memory and the ability to modify it respectively. Users who are not sure whether the project file on the laptop is the latest version can use the ETS App “Project Compare” to check.



ETS Apps by KNX Association make ETS more attractive: for instance with the ETS App “Extended Copy” application, users can easily highlight and duplicate elements of existing projects. The target copies can then be adapted and used in other parts of a building.

Customised flexibility

With the ETS Apps, KNX presents a concept to adapt the Engineering Tool Software ETS to the growing worldwide demands. ETS can be customised to individual needs while maintaining compatibility. Especially KNX experts will profit from the transparency and faster configuration offered by these extra tools. Also, KNX members can now tailor their own apps according to the different features of their products and become even more flexible. The ETS Apps are amongst others available in the KNX Online Shop and can be activated via a license.



Extensions for ETS support the realisation of professional projects. The ETS App “Device Compare” for instance can be used to compare the actual status of an existing installation with the target status of the ETS project.



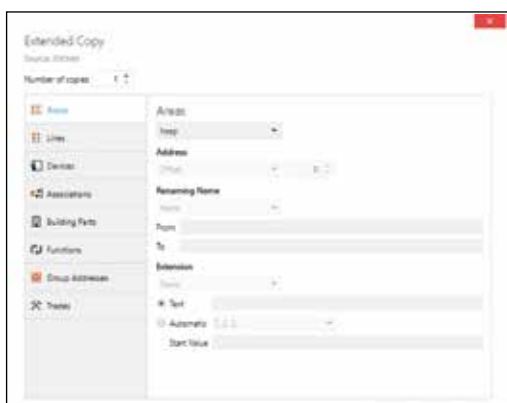
The ETS App “Labels” allows to print prefabricated labels available from the office supply store. The information for this is taken over directly from the ETS project.

ETS Apps Overview

ID	ETS App	Function	Advantage	Price €
1	Extended Copy	Duplicates existing project parts	Quick creation of similar structures in a project	99,-
2	Split & Merge	Projects can be split, and reunited again	Colleagues can work together on KNX projects	199,-
3	Device Templates	Pre-configured devices can be stored as favorites	Allows to quickly insert pre-configured devices into projects	79,-
4	Replace Device	Replaces l...n units in existing projects with similar devices	Device configurations will be taken over automatically	79,-
5	Labels	Use ETS project information as base for device stickers	Time saving and proper labeling	49,-
6	Project Tracing	Track all possible ETS project changes	Proof in case of warranty claims, check project progress	49,-
7	Training Centre Tool	Unload the entire installation e.g. after course completion in a training center	Quick and easy training session preparation	Free!
8	Device Reader	Retrieve detailed data from KNX devices	Enhanced problem analysis	49,-
9	Device Editor	Retrieve and modify detailed data from KNX devices	Enhanced problem analysis	49,-
10	Device Compare	Compare the KNX installation with its ETS project	Dissimilarities in device configurations will be shown	49,-
11	EIBlib/IP	Reactivates the protocol EIBlib/IP in ETS	If you need to access an old project with the old protocol	49,-
12	Replace Unreg	Replace an Application Program with an updated version from your development directly in the ETS project (keeping the parameters/associations).	Save time when developing the Application Program for your devices	Free!

KNX Association, Belgium

**Speed up project design!
ETS App: “Extended Copy”**



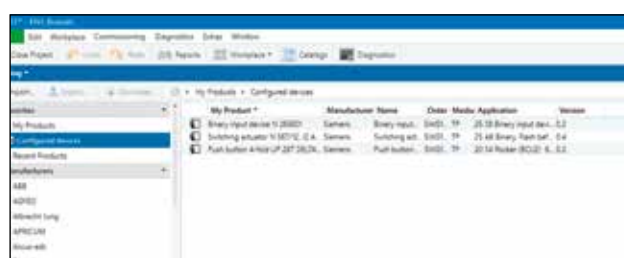
The ETS App “Extended Copy” is used to quickly create similar structures in a project. This feature is meant especially for KNX users dealing with large projects, with for example recurring room functionality. During the copy process, a dedicated dialog will allow devices, bus lines, even complete building parts together with their destination address

assignments, parameterisation, Group Addresses, links, text attachments and other information to be adjusted. Thereafter, the configuration is inserted seamlessly. This results in new projects at very short notice, projects that otherwise had to be re-configured via a very time-consuming workflow.

Contact: www.knx.org

KNX Association, Belgium

**Re-use what you created before
ETS App: “Device Templates”**



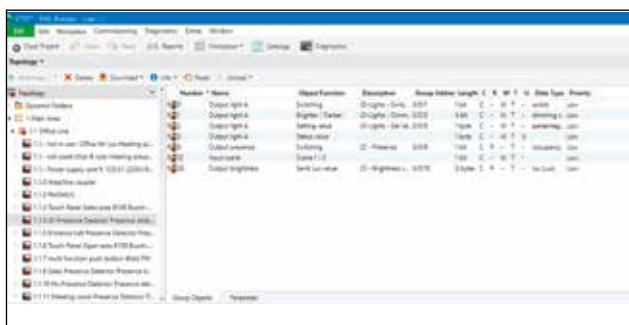
In practice, configuring KNX devices can be very time-consuming. If you need devices with particular configurations more than once, it may be useful to have them somewhere available for further use afterwards. With the ETS App “Device Templates” such ready-made devices can be added to a “favorites list”. Also KNX devices used in all

(or almost all) projects can be handled in the same way. Then, they are also available for other projects – like from the manufacturer catalog – but then fully pre-configured. Users who repeatedly integrate similar functions can save themselves a lot of time and effort with this ETS App.

Contact: www.knx.org

KNX Association, Belgium

**Involve colleagues for KNX projects!
ETS App: “Split & Merge”**



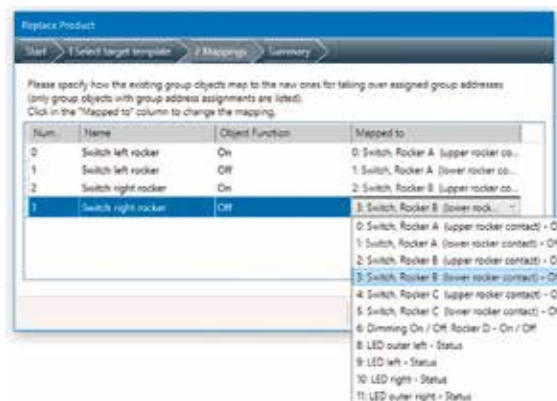
Large KNX projects ask for teamwork. But how to organise the interface between the different parts of the project? The situation where several people simultaneously edit a KNX installation may, e.g. for Individual Address assignment or central function configuration, lead to inconsistencies. Using the ETS App “Split & Merge”, guarantees smooth cooperation for such situations. The advantage is

that you can split a previously defined project into two, three or more parts. Several employees can configure them independently and merge again after completion of the entire project. Thanks to teamwork, the processing time for enhanced projects can be reduced. Even unrelated projects can be merged with this function.

Contact: www.knx.org

KNX Association, Belgium

**Exchange Devices, but keep their configurations
ETS App: “Replace Device”**



One of the benefits of using KNX electrical installations, is their flexibility and the possibility to realize cost-effective enhancements. Because it usually only concerns parameterisation. And even this can now – at least partly – be optimised. This is thanks to the ETS App “Replace Device”, which replaces KNX devices while keeping their parameter settings. If one exchanges

e.g. a four-fold actuator with an eight-fold actuator, the parameters of the first four channels are automatically configured. This is possible for devices with similar functionality, regardless of the manufacturer. Even when devices need to be repaired, users benefit from this ETS App.

Contact: www.knx.org

KNX Association, Belgium
Labeling vs. Confusion
ETS App: “Labels”

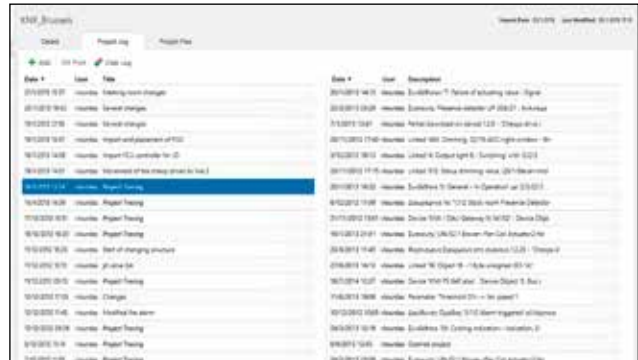


The project is ready for commissioning, but are all bus components really ready for this assignment? The importance of the visual information regarding Individual Address, mounting, function, etc. on devices, is not to be underestimated. Especially for this situation KNX Association has come up with a very helpful tool. With the ETS App

“Labels”, device labels based on the information from the ETS project, can be printed as stickers. This does not only facilitates the work of the installer or the system integrator, but also provides consistent overview within distribution boards and cabinets.

Contact: www.knx.org

KNX Association, Belgium
Who made changes in the project?
ETS App: “Project Tracing”

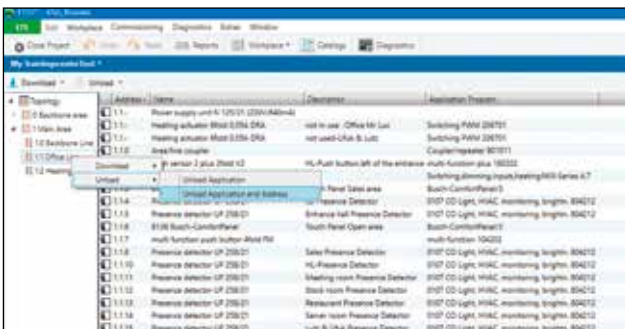


When a KNX project is finished, the installation company will usually handover the ETS project to the customer. This implies that any third party can change configuration parameters afterwards. When this leads to a malfunction, the system integrator has of course every right to decline warranty. The system integrator had however so far no way to proof that a third party caused

the malfunction, this situation is now rectified thanks to the ETS App “Project Tracing”. This feature is activated via a password, thereafter ETS automatically lists all possible changes made for projects, all in chronological order. This App can also serve to monitor the progress of projects under construction.

Contact: www.knx.org

KNX Association, Belgium
Unload an entire project by a click of the mouse
ETS App: “Training Center Tool”



After the devices of a KNX project are programmed, it is still possible via ETS to make changes to the project. Unloading the entire KNX project is however not common, unless it concerns the equipment used for KNX training. For a training center, unloading entire KNX projects is a daily practice; at the end of a training session the equipment

needs to be set to the initial state as quick as possible, in order to start the next session. The ETS App “Training Center Tool” allows the instructor to reset an entire KNX installation with just one mouse click, which makes this ETS App extremely useful for training centers.

Contact: www.knx.org

KNX Association, Belgium
In case of doubt, compare the installation with the ETS project
ETS App: “Device Compare”



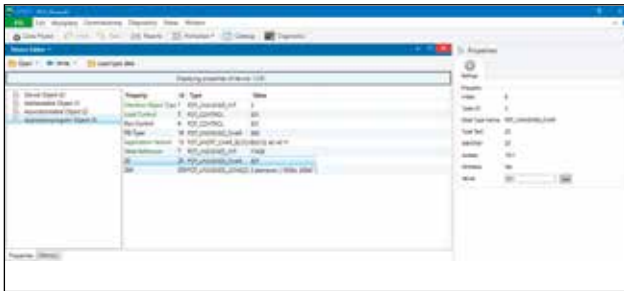
Which ETS project is the latest? What should not happen, can in practice unfortunately happen. If a KNX project has been modified because a particular function had to be optimised, doubts can arise. Rather than trying and guessing, use the ETS App “Device Compare”. This allows the comparison of individual devices from the installation with the available

data in the corresponding ETS project. In this way the current state in the installation can be compared with the expected state in the ETS project. Dissimilarities in device configurations will be shown, and the result can also serve as evidence in case a third party has tampered with the installation.

Contact: www.knx.org

KNX Association, Belgium

**Experts check out device memory
ETS App: “Device Reader”**



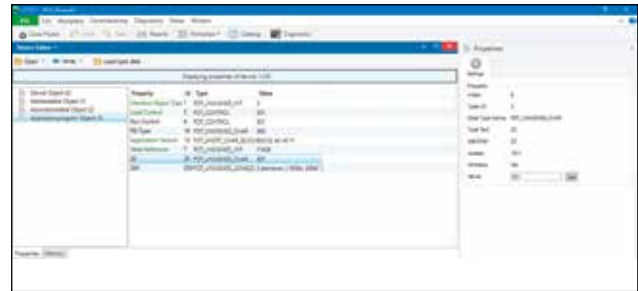
KNX devices are characterised by the fact that their application software offers parameters for all possible functions. Furthermore, with the help of ETS, device configurations can be easily changed at all times. But there are however situations where systems integrators have to dig deeper into devices. It can for example happen that unknown

bus components come to the surface unexpectedly, when reconstructing an existing KNX installation. In such cases, the ETS App “Device Reader” can be used in order to read out the memory of devices, which will provide the user with the crucial and possible clarifying information.

Contact: www.knx.org

KNX Association, Belgium

**KNX Members can check out and modify
the device memory
ETS App: “Device Editor”**



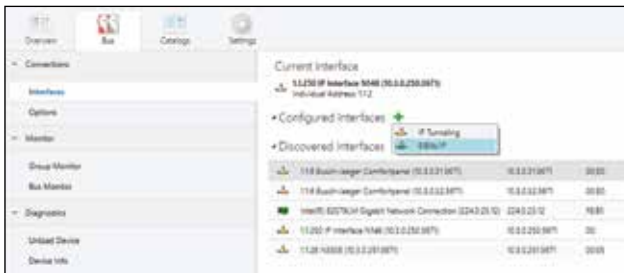
The ETS App “Device Editor” has similar functionality with the ETS App “Device Reader” with however an important difference. Using this ETS App, the KNX Members cannot only read out the memory of a KNX device, but they can also modify the contents of unprotected memory blocks. This is very important when

e.g. a device is under testing by the manufacturer in a real installation environment and the test engineer wants to manipulate the memory of the device to check its functionality without the need to create a new product database using the Manufacturer Tool.

Contact: www.knx.org

KNX Association, Belgium

**Reactivates the protocol EIBlib/IP in ETS
ETS App: “EIBlib/IP”**



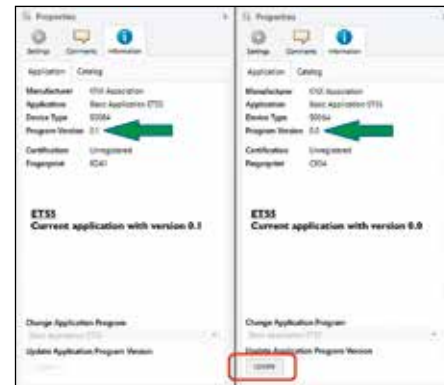
KNX, besides all the known advantages, is also known for the backwards KNX product compatibility with the newest ETS versions. Therefore, if one needs to access a project that has an old KNX device that supports only the non-standardised

EIBlib/IP, then one has the possibility to do it using the ETS App EIBlib/IP, which allows ETS to connect to a KNX device using that protocol and being able to configure the entire installation.

Contact: www.knx.org

KNX Association, Belgium

**Replace an Application Program with an
updated version from your development
ETS App: “Replace Unreg”**



In some cases it may be necessary to swap or replace an Application Program (in a project) of an already existing and configured device (e.g. when urgent updates are needed or an error occurs in the Application

Program itself). ETS allows easy replacement of the Application Program while maintaining all project parameters or assigned Group Addresses.

Contact: www.knx.org



www.knx.org