

EWT-KNXIPTPRT VERSION 2.5, JULY 2, 2017

KNX IP ROUTER

TECHNICAL AND APPLICATION DESCRIPTION



Notice:

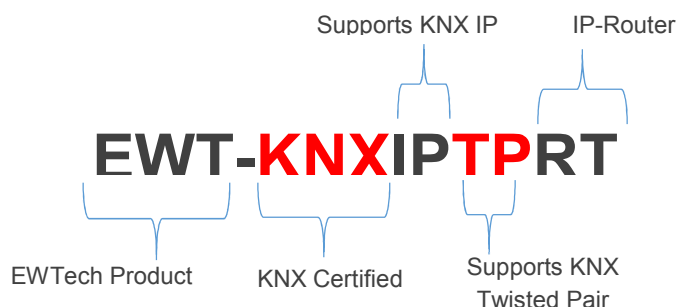
Details, modifications, and corrections may be subject to change without notice. EWTech gives no warranty for the accuracy of the document. The reproduction, transmission and use of this document or its contents is not permitted without written authority. All rights reserved.

1. TABLE OF CONTENTS

1. Table of Contents	2
2. Product Coding	3
3. Product description and application	3
4. EWT-KNXIPTPRT Highlights	5
5. General Information	6
5.1. Tunneling	6
5.2. Routing	6
5.3. KNX IP Routers	6
6. Operational Description	6
6.1. Operation Modes	7
6.1.1. Normal Mode	7
6.1.2. Boot Mode	8
6.1.3. The Function Button	9
6.1.3.1. Manual Function	9
6.1.3.2. Factory Reset	9
6.1.4. The Programming Button and LED	10
6.2. KNX Telegrams in the IP Network	10
6.2.1. The EWT-KNXIPTPRT in a Network Installation	11
6.2.2. The EWT-KNXIPTPRT as an Area Coupler	11
6.2.3. The EWT-KNXIPTPRT as a Line Coupler	11
6.2.4. The EWT-KNXIPTPRT in a Mixed System	12
7. Application Description	13
8. ETS-Parameters	13
8.1. Physical Address Assignment	13
8.2. General	14
8.3. IP Configuration	16
8.4. KNX Multicasting Address	18
8.5. Main Line	20
8.6. Sub Line	22
9. Web Front-End	25

9.1.	Accessing the Device	25
9.1.1.	Via the Windows Network with UPnP	25
9.1.2.	Via the host (MAC Address)	25
9.1.3.	Via the IP Address	26
9.2.	Device Info	26
9.3.	KNX	27
9.4.	Update	28
9.5.	Tunneling addresses (Additional Phys. Addresses)	31
10.	State of Delivery	33
11.	Technical Data	34
12.	Technical Drawings	35
13.	Legal Notice	36
14.	FAQ	37
15.	Installation example and maintenance	39

2. PRODUCT CODING

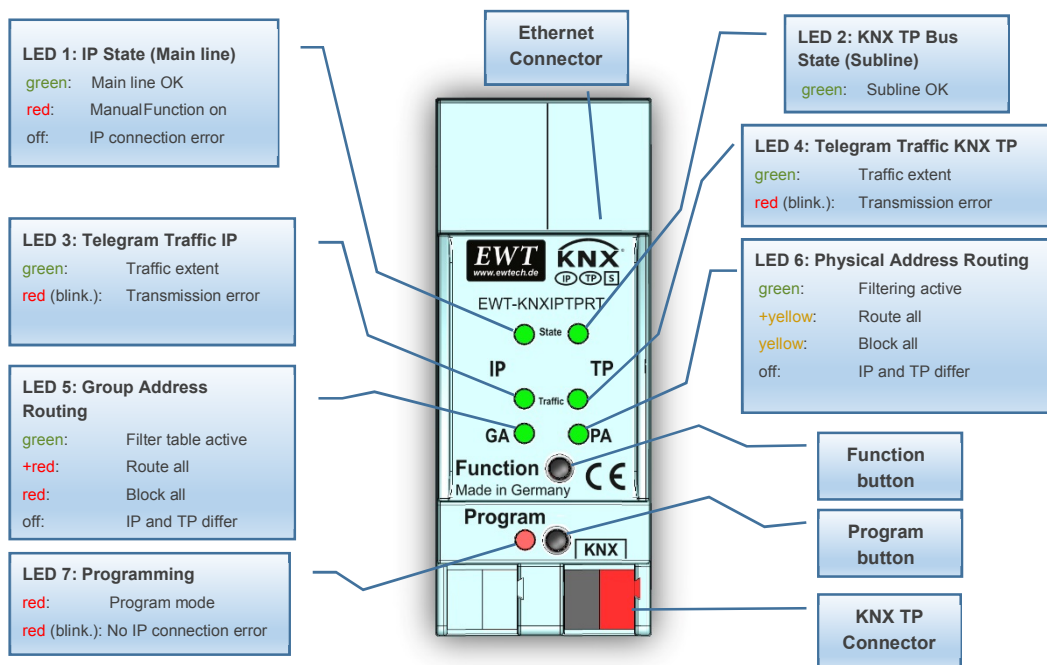


3. PRODUCT DESCRIPTION AND APPLICATION

The **EWT-KNXIPTRT** works as line/backbone coupler to provide a data connection between the upper KNXnet/IP line (main line) and the lower KNX TP line (subline). Basic functionality of the **EWT-KNXIPTRT** is to couple the Ethernet with one or more KNX TP lines featuring galvanic isolation between Ethernet and KNX TP line(s). Due to its flexibility, the **EWT-KNXIPTRT** can be used as a line coupler e.g. to connect several KNX TP lines via Ethernet. And it can be used as a backbone coupler to connect several TP areas or different TP installation systems via Ethernet. Main task of the **EWT-KNXIPTRT** is to filter the traffic according to the installation place in the hierarchy

(individually addressed telegrams, in this document named Physical telegrams) or according to the built-in filter tables for group oriented communication (Group telegrams). With the ETS or any other KNX compatible commissioning tool the **EWT-KNXIPTPRT** can be used as programming interface. For this purpose the device provides up to four additional physical addresses to be used for tunneling. The **EWT-KNXIPTPRT** has no KNX communication objects for itself.

EWTECH's **EWT-KNXIPTPRT** is a **Tunneling** and **Routing** device. These features are described in the following sections in detail. The device front panel consists of seven LEDs and two buttons as illustrated below. The device offers a detailed internal diagnosis by displaying all operational states in different **Operation Modes**. LEDs show the variety of device states like state, traffic, errors/faulty communication NACK, BUSY on the bus, filter table state, etc.



Please note: Please note: In this document the term “physical address” means the “physical address” as well as the “individual address”. Both of these terms are used by the KNX organization interchangeably. In this document only the term “physical address” is used.

4. EWT-KNXIPTPRT HIGHLIGHTS

- The EWT-KNXIPTPRT is one of the rare KNX IP routers on the market that supports the extended frame format and long telegrams up to 240 bytes (APDU). In combination with the EWTECH line coupler “EWT-KNXUSBTP” and the EWTECH USB interface “UIMtp” long messages are made possible (e.g. for energy metering applications).
- The EWT-KNXIPTPRT favourably replaces a line coupler or an area coupler. Using LAN as a fast medium to exchange telegrams between lines and/or areas is the great advantage.
- The EWTECH EWT-KNXIPTPRT works without external power supply.
- Providing tunneling protocols and a connection point for the ETS (or any other tool to enable commissioning and monitoring) the ETS address for tunneling is not necessarily the one that is already configured. Four parallel connections are possible, one separate address for each and every connection.
- IACK on own sent out messages (ETS configurable).
- After no IACK response on a sent message the EWT-KNXIPTPRT can repeat it up to three times.

For physically addressed or for group addressed telegrams this can be configured via ETS independently. In case of an IACK response there will be no repetition. The failure mechanism of a negative IACK or BUSY is still maintained hereby.

- Programmable automatic switch on of the filter table after timeout.
- For a predefined amount of time (ETS configurable) it is possible to switch off the filter table with pressing a button on the device. So, without reconfiguring the device with the ETS the filter table can be switched off by a button press which is necessary for running fast diagnostics on site. Filtering of messages can temporarily be disabled by pressing the “Function” button. This eases commissioning and debugging of the system. Without an ETS download a temporary access to other lines is possible. After the timeout an automatic switching the filter table on is implemented (the timeout is configurable in the ETS). This avoids forgetting to reactivate the filter.
- UPnP is available to discover the device in the IP network. That is only possible with a proper network installation in terms of topology. With the KNXnet/IP Search Request the ETS can recognize the device as a communication interface.
- The WEB interface operations provide a set of informative settings and an opportunity to switch the device to program mode. With the Web front-end the firmware can be updated.
- For networks with a high bus load a high internal amount of communication buffers is suitable.
- The EWT-KNXIPTPRT is featuring a high internal amount of communication buffers being capable of smoothing peaks in the communication load course.
- The EWT-KNXIPTPRT’s ETS database entries are available for the ETS3.0d and upward.
- The **EWT-KNXIPTPRT** supports KNXnet/IP, ARP, ICMP, IGMP, HTTP, UPnP discovery, UDP/IP, TCP/IP, DHCP und Auto IP.

5. GENERAL INFORMATION

5.1. TUNNELING

The presence of the Internet Protocol (IP) has led to the definition of KNXnet/IP. KNXnet/IP provides the means for point-to-point connections like “KNXnet/IP Tunneling” for ETS and/or between a supervisory system and a KNX installation.

The KNXnet/IP Device Management provides configuring KNXnet/IP devices via the KNX network effectively. Additionally, with this the time required for network configurations is reduced.

5.2. ROUTING

Routing is the way of interconnecting KNX lines or areas via IP network(s) using KNXnet/IP. In IP networks the KNXnet/IP Routing defines how KNXnet/IP routers communicate with each other.

5.3. KNX IP ROUTERS

The EWTECH EWT-KNXIPTPRT is a KNX IP router. KNX IP routers are highly similar to TP line couplers. The only exception is that they use the communication medium Ethernet as their main line. However, it is also possible to integrate KNX end devices via IP directly.

This makes the Ethernet a KNX medium.

6. OPERATIONAL DESCRIPTION

According either to the factory default settings or the latest parameter settings downloaded from ETS (also other tools) in normal operating mode the EWT-KNXIPTPRT operates as it is supposed to. The EWT-KNXIPTPRT features two different modes, the “Normal Mode” and the “Boot Mode”.

6.1. OPERATION MODES

6.1.1. NORMAL MODE

Number	LED	Colour	Explanation / Range
1	Bus State IP (Main line)	green	Main line OK
		red	Manual Function active
		< off >	Ethernet/KNX IP connection error
2	Bus State KNX TP (Subline)	green	Subline OK
		< off >	Subline not connected
3	Telegram Traffic IP (Main line)	blinking green	Telegram traffic extent indicated by blinking (Speed up to 10 Mbit/s)
		blinking red	Transmission error
		< off >	No telegram traffic
4	Telegram Traffic KNX TP (Subline)	blinking green	Telegram traffic extent indicated by blinking
		blinking red	Transmission error
		< off >	No telegram traffic
5	Group Address Routing	green	Filter table active
		red	Block all
		green+red	Mixed colour: Route all
		< off >	Routing of Group telegrams not the same between main line and subline
6	Physical Address Routing	red	Filtering active
		orange	Block all
		orange+red	Mixed colour: Route all
		< off >	Routing of Physical telegrams not the same between main line and subline
7	Programming	red	Program mode or Boot mode active
		blinking red	No Ethernet/KNX IP connection

6.1.2. BOOT MODE

When operating in “Boot Mode”, it is possible to update the **EWT-KNXIPTPRT**’s firmware (see [Update](#)). For more detailed information please refer to the section [Web Front-End](#). While being in “Boot Mode”, LED 1, 2, 3, and 7 have the states as described here:

LED 1 Bus State IP	Keeps on lighting green
LED 2 Bus State KNX TP	Blinking green
LED 3 Telegram Traffic IP	Blinking green (not at the same tempo as LED 2)
LED 7 Programming	Keeps on lighting red

The device enters the “Boot Mode” in the following two situations:

- If you try to reset the application after a communication error in the IP line (Traffic IP line LED lighting red) by pressing the Function button for 15 seconds.
- If you try to reset the application by pressing the Function button for 15 seconds having the Ethernet cable disconnected.

To exit the “Boot Mode” it is necessary to enter the [Update](#) tab in the [Web Front-End](#) and either update the firmware (if you have a new firmware available for your **EWT-KNXIPTPRT**) or reset the application by pressing the “Abort” button.

6.1.3. THE FUNCTION BUTTON

The Function button is used for two purposes; either to switch on the Manual Function or to do a factory reset. It depends on the current operation mode of the EWT-KNXIPTPRT and the duration of time this button is being pressed.

6.1.3.1. MANUAL FUNCTION

- **Long press (≈ 3 sec) in “Normal Mode”**
The default function is set by the IP line and the (KNX) line parameters. To configure the “Manual Function” and set the Fallback time use the parameter tab “General”. Please note:

The latest downloaded settings (parameters) and filter table are still available after switching back from “Manual operation” to “Normal operation”.

6.1.3.2. FACTORY RESET

- **Very long press (≈ 15s) in “Normal Mode”**
A factory reset is carried out by pressing the button for about 15 seconds (LEDs light with mixed color). After release, pressing it again for some seconds resets all the parameters to factory default (incl. physical address). Subsequently, the LEDs change their status.
- **Rather long press (≈ 8s) in “Boot Mode”**
A factory reset is carried out by pressing the button for about 8 seconds (LEDs light green and after 2 seconds the LED Bus Stat KNX light red), then release. Even after a factory reset in this mode the EWT-KNXIPTPRT stays in the “Boot Mode”. For more details about the “Boot Mode” please refer to [Boot Mode](#).

6.1.4. THE PROGRAMMING BUTTON AND LED

- In “Normal Mode”:
To download the desired physical address or to download a full ETS setting the Program button needs to be pressed. Successive pressing on the Program button will lead to turn on and off the Programming LED (LED 7) which lights in colour red. The blinking red Programming LED indicates that the Ethernet cable is not properly connected.
- In “Boot Mode”:
The Program button is used to switch the EWT-KNXIPTPRT to “Boot Mode”. For more details please refer to [Boot Mode](#). Even when being in “Boot Mode” a successive pressing of the Program button will lead to turn on and off the Programming LED.

6.2. KNX TELEGRAMS IN THE IP NETWORK

The EWT-KNXIPTPRT sends telegrams from/to the KNX to/from the IP network in accordance with the KNXnet/IP protocol specification. According to the default setting these telegrams are sent as multicast telegrams to the multicast IP address 224.0.23.12 port 3671. The multicast IP address 224.0.23.12 is the defined address for the KNXnet/IP from the KNX Association in conjunction with the IANA. This address should be preserved and used as defined. Only if it becomes necessary due to the existing network, it could be changed in the “General Parameters” as described in [KNX Multicasting Address](#). During commissioning, it is important to note:

- ***All KNX IP devices that are intended to communicate with each other via IP network must have the same IP multicast address***
- ***Multicast IP address 224.0.23.12 may need to be changed corresponding to the type of network and the setting of the network components***
- ***IGMP (Internet Group Management Protocol) is used for the IP configuration to establish multicast group memberships***
- ***If the IP address is changed from the IP side, it may sometimes happen that the ETS does not recognize the device anymore and the connection can no longer be established (tunneling uses IP address)***
- ***As a precaution, always run a restart or change the address from the TP side***

- *Please ask your network administrator if problems occur for the IP Address assignment*
- *According to the topology, the additional physical addresses (for tunnelling) always have to be assigned in the range of subline addresses. For more information about the additional tunneling addresses please refer to [Tunneling addresses \(Additional Phys. Addresses\)](#).*
- *If a KNX/USB or KNX/IP interface is used to program a device of another line connected to a KNX IP Router, you should pay close attention to have the correct topology!*

6.2.1. THE EWT-KNXIPTPRT IN A NETWORK INSTALLATION

In a network installation, the EWT-KNXIPTPRT can either be used as a KNX area coupler or as a KNX line coupler.

6.2.2. THE EWT-KNXIPTPRT AS AN AREA COUPLER

The EWT-KNXIPTPRT can replace an area coupler in a KNX network. For this purpose it must receive the physical address of an area coupler (X.0.0, $1 \leq X \leq 15$). In the ETS up to **15 areas** can be defined with area couplers.

6.2.3. THE EWT-KNXIPTPRT AS A LINE COUPLER

The EWT-KNXIPTPRT of a KNX network can assume the functionality of a line coupler. For this purpose it must have the physical address of a **line coupler** (X.Y.0, $1 \leq X \text{ \& \ } Y \leq 15$). In the ETS up to **225 lines** can be defined (from 1.1.0 to 15.15.0).

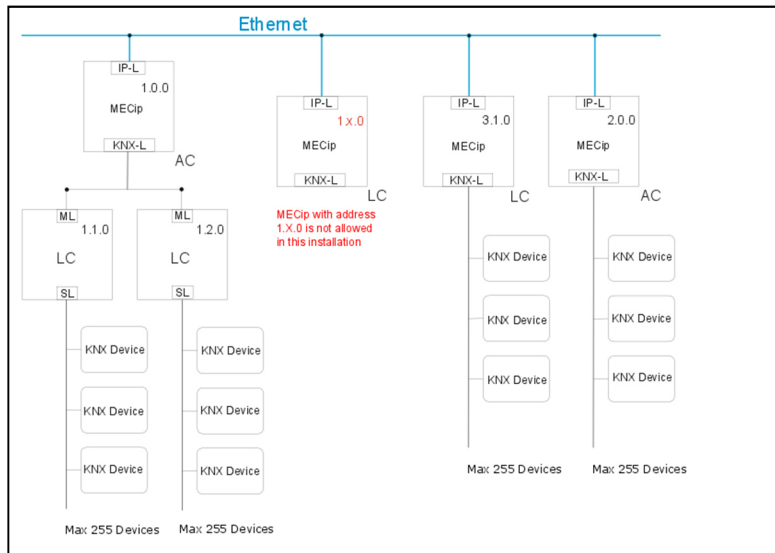
6.2.4. THE EWT-KNXIPTPRT IN A MIXED SYSTEM

If it is necessary in a KNX system to use the EWT-KNXIPTPRT at one point as an area coupler,

e.g. office or home complex, and at another point as a line coupler, e.g. a remote underground garage or a pool; this is possible. It is only necessary to ensure that the EWT-KNXIPTPRT used as a line coupler uses a line coupler address from a free addressing area. The following picture best illustrates the topology with EWT-KNXIPTPRT routers as area and/or line couplers.

Special attention needs to be paid that if a EWT-KNXIPTPRT area coupler with address “1.0.0” already exists in the installation, no other EWT-KNXIPTPRT line coupler (or any other KNX IP router) with address “1.X.0, 1≤X≤15” can be used in that network, and of course vice versa,

if a EWT-KNXIPTPRT line coupler with address “1.1.0” already exists in the installation, no other EWT-KNXIPTPRT area coupler (or any other KNX IP router) with address “1.0.0” is allowed to be used in that network.



A direct connection between two **EWT-KNXIPTPRTs** is possible as well. In this case, the AutoIP will assign each **EWT-KNXIPTPRT** an IP address and the two **EWT-KNXIPTPRTs** will communicate either via a normal or a crossed network cable.

- | | | |
|--------------------------|-----|--------------|
| IP-L: Backbone (IP) line | LC: | Line Coupler |
| KNX-L: KNX line | ML: | Main line |
| AC: Area Coupler | SL: | Sub line |

Picture 2: Mixed system

7. APPLICATION DESCRIPTION

When the coupler receives telegrams (for example during commissioning) that use physical addresses as destination addresses, it compares the physical addresses of the receiver with its own physical address and then decides whether it has to route the telegrams or not.

Due to telegrams with group addresses the coupler reacts in accordance with its parameter settings. During normal operation (default setting), the coupler only routes those telegrams whose group addresses have been entered in its filter table.

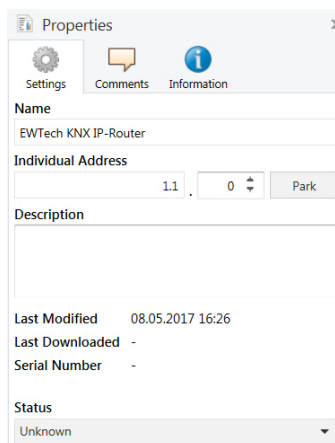
If the coupler routes a telegram and does not receive an acknowledgement, or if a bus device discovers a transmission error, the coupler repeats the telegram up to three times (depending on the corresponding parameter that is set to the device through the last ETS download). With the parameters „Repetitions if errors...“, this behavior can be set separately for both lines. These parameters should stay with the default setting.

- **The ETS does not provide an unload procedure for the application of the IP-Router**
- **In the following description, we describe parameters using screenshots created in the ETS5 version**

8. ETS-PARAMETERS

All screen shots in this chapter represent the **EWT-KNXIPTPRT**'s database entry in ETS5.

8.1. PHYSICAL ADDRESS ASSIGNMENT



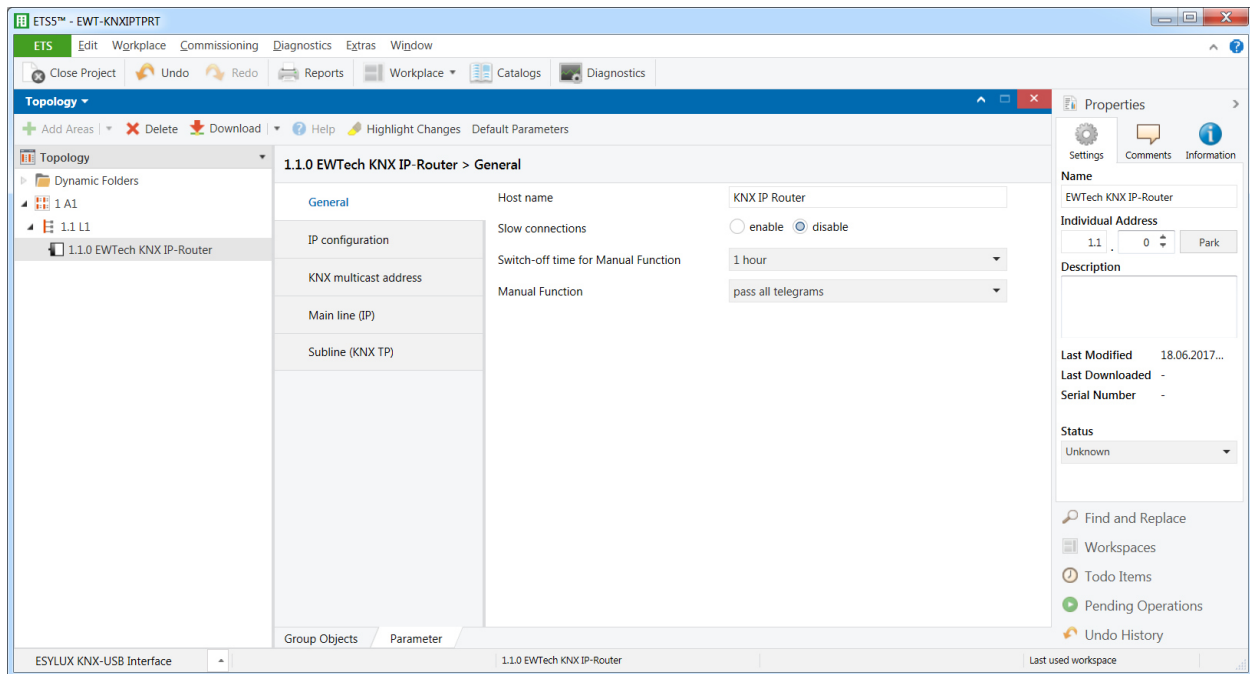
Picture 3: Properties window

To download the desired physical address or to download a full ETS setting into the device, during the procedure the programming button needs to be pressed.

(The programming button is used to put the device into “Program Mode”). With the ETS the physical address can be assigned to the device by setting the desired address in the properties window of the ETS, starting the download and pressing the programming button. After assignment the device restarts itself. (A blinking red LED 7 indicates that the Ethernet cable is not properly connected.)

To commission the device a PC with ETS and an interface connection (IP, USB) to the KNX bus system is required. The device is supplied with the individual physical address 15.15.255. The KNX product database entry (available for ETS4 and higher) can be downloaded from our website or the KNX Online Catalog App.

8.2. GENERAL



Picture 4: General

ETS Text	Selection	Comment
	[Factory default]	
Host name	<30 Characters allowed> [KNX IP Router]	Field to enter the device name providing an easy search of the device with the ETS or with a KNXnet/IP visualization system.
Slow connections	enable disable [disable]	Enable to support slow tunneling connections.
Switch-off time for Manual Function	10 min, 1 hour, 4 hours, 8 hours [1 hour]	After expiry of this time period the “Manual Function” is switched off automatically.
Manual Function	disabled pass all telegrams pass all Physical telegrams pass all Group telegrams [pass all telegrams]	Configuration setting for telegram routing when the “Manual Function” is activated.

Please note that commissioning straight at delivery status (default settings) means:

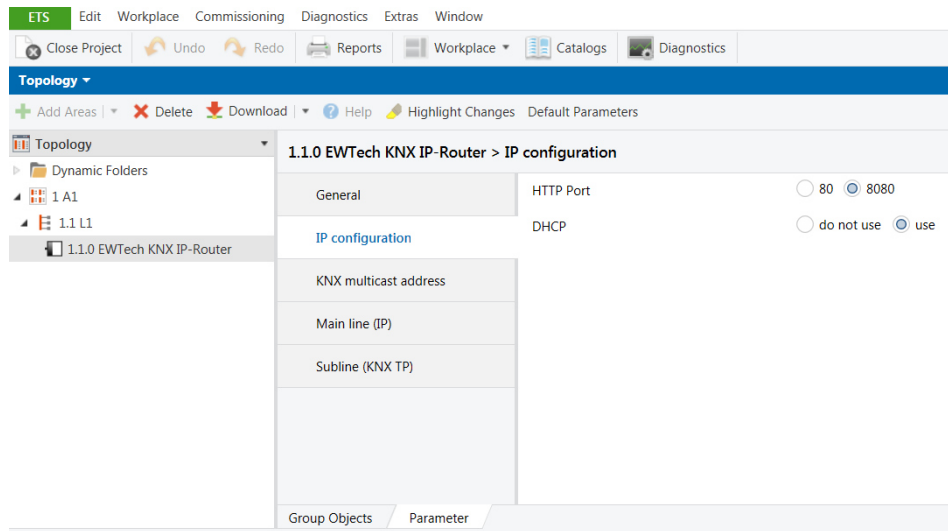
- **The IP coupler does block all telegrams because the filter table is not defined,**
- **The fall-back time after manual operation is 120 min and**
- **The physical address is 15.15.0.**

Important notes:

- **If the host name is changed by an ETS4 download, a manual restart is recommended to take over this change.**
- **The configuration of the IP connectivity (Host name, IP address, KNX multicast address) is not updated after an ETS download. It is essential doing a manual device restart to get these values updated.**

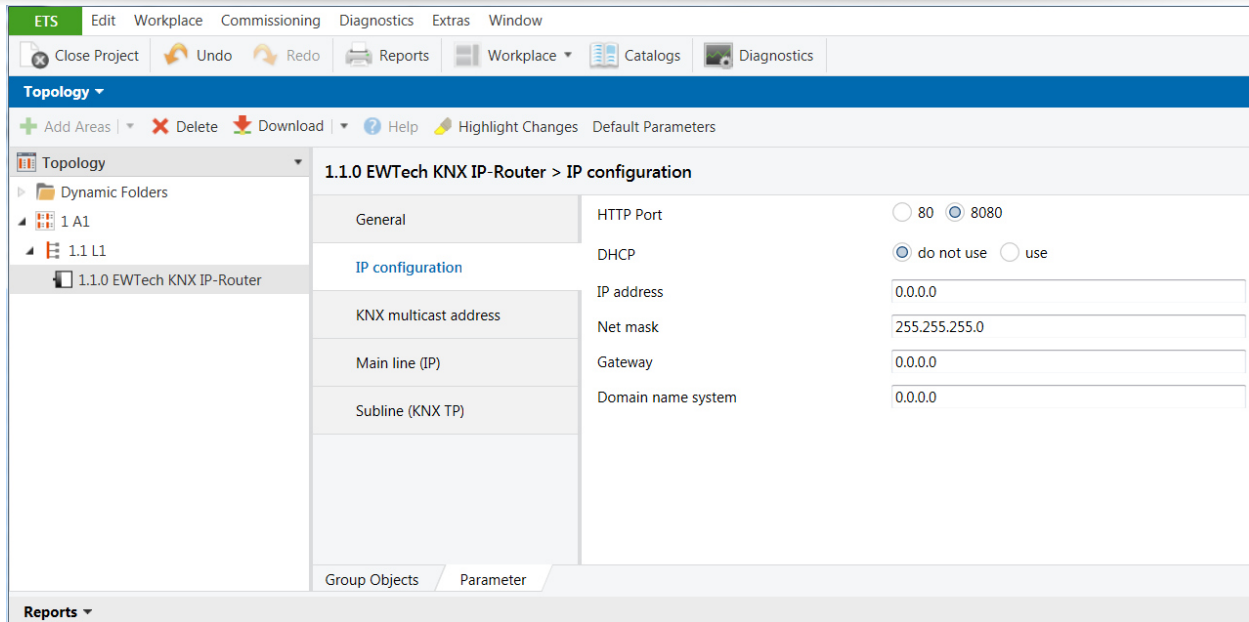
8.3. IP CONFIGURATION

After downloading the IP parameters and the device name a manual restart must be executed.



Picture 5: IP configuration

ETS Text	Selection [Factory default]	Comment
HTTP Port	80 8080 [8080]	Select one of the two official system ports.
DHCP	do not use use [use]	If DHCP is used, no IP parameters have to be set. If DHCP is not used, set following parameters manually (see table below).

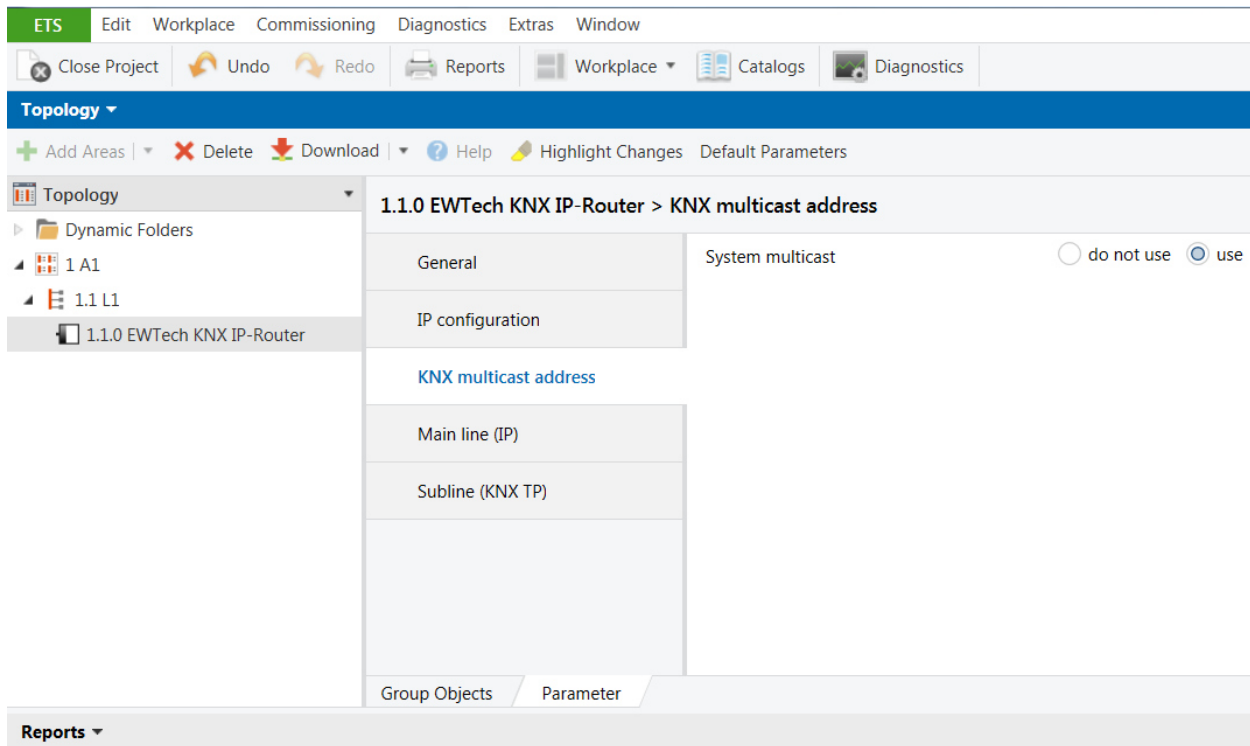


Picture 6: IP address manual configuration

ETS Text	Selection [Factory default]	Comment
IP address	0-255.0-255.0-255.0-255 [0.0.0.0]	IP Byte 1 to 4: manual input.
Net mask	0-255.0-255.0-255.0-255 [255.255.255.0]	NM Byte 1 to 4: manual input.
Gateway	0-255.0-255.0-255.0-255 [0.0.0.0]	GW Byte 1 to 4: manual input.
Domain name system	0-255.0-255.0-255.0-255 [0.0.0.0]	DNS Byte 1 to 4: manual input

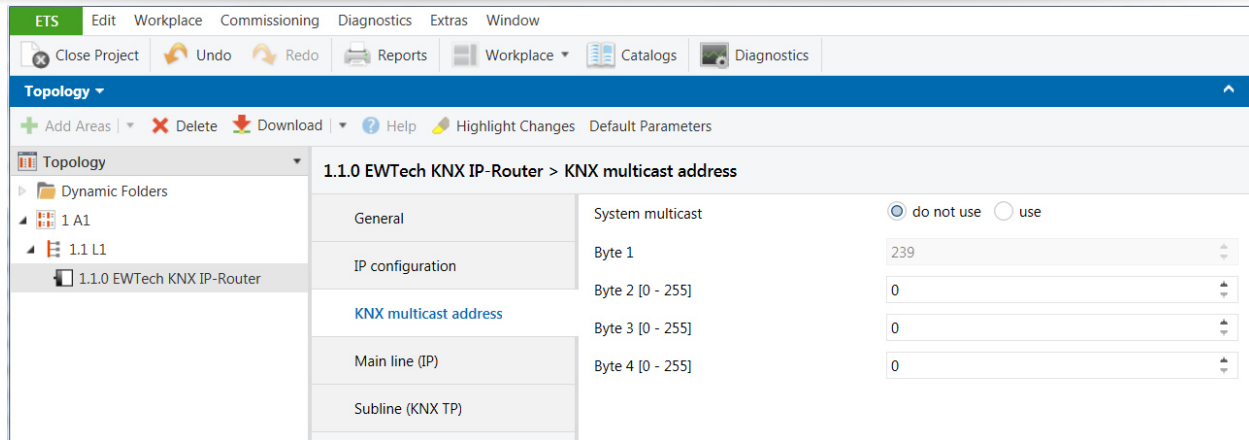
8.4. KNX MULTICASTING ADDRESS

The multicast address **224.0.23.12** is the defined address for the KNXnet/IP from the KNX Association in conjunction with the IANA. This address shall only be changed if it becomes necessary due to the existing network.



Picture 7: System multicast address

ETS Text	Selection [Factory default]	Comment
System multicast	do not use use [use]	<ol style="list-style-type: none"> If “use” is selected, then the multicast address is 224.0.23.12 (predefined). If “no” is selected, the address <u>has to be</u> defined manually.

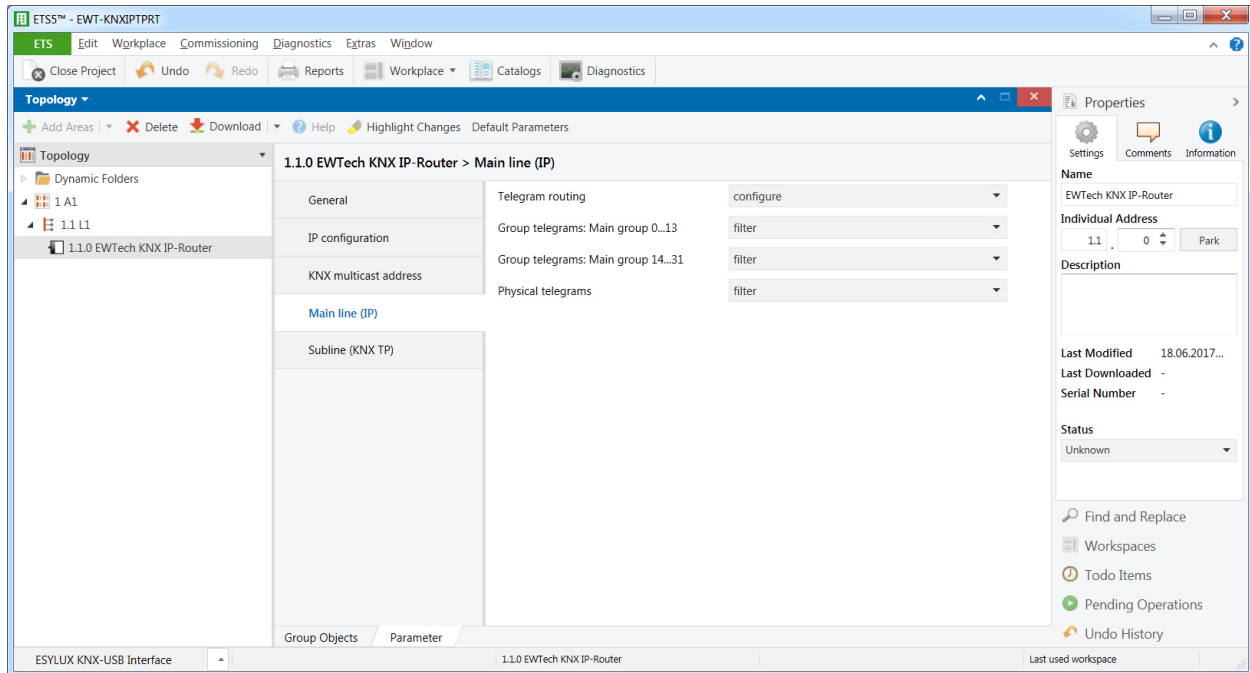


Picture 8: KNX multicast address

ETS Text	Range [Default value]	Comment
Byte 1 (of the IP routing multicast address)	System: [224] Physical: [239]	If System multicast address is used, "224" is permanently set. If Physical multicast address is used, "239" is permanently set.
Byte 2 [0 - 255] (of the IP routing multicast address)	0-255 [0]	Can only be set manually if Physical multicast address is used.
Byte 3 [0 - 255] (of the IP routing multicast address)	0-255 [23]	Can only be set manually if Physical multicast address is used.
Byte 4 [0 - 255] (of the IP routing multicast address)	0-255 [12]	Can only be set manually if Physical multicast address is used.

Note: *During commissioning, it should be regarded that all KNX IP devices intended to communicate with each other via IP must use the same IP routing multicast address.*

8.5. MAIN LINE

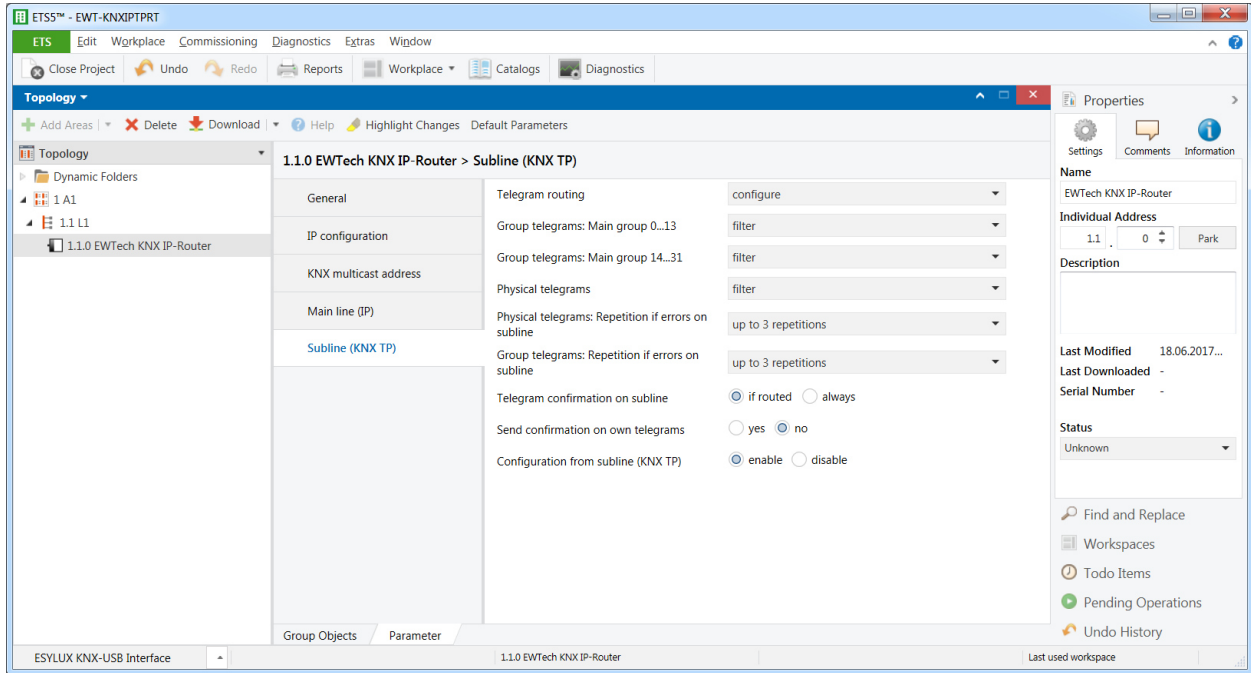


Picture 9: Main line configuration

ETS Text	Selection [Factory default]	Comment
Telegram routing	Group: filter, Physical: block Group and Physical: filter Group: route, Physical: filter Group and Physical: route configure [Group and Physical: filter]	- block : no telegrams are routed. - filter : only telegrams entered in the filter table are routed. - route : all telegrams are routed. - configure : the following parameters can be set manually.
Group telegrams: Main group 0...13	1. transmit all (not recommended) 2. block 3. filter [filter]	1. Group telegrams with the main group 0...13 are routed. 2. Group telegrams with the main group 0...13 are not routed. 3. Group telegrams with the main group 0...13 are routed if they are entered in the filter table.
Group telegrams: Main group 14...31	1. transmit all (not recommended) 2. block 3. filter [filter]	1. Group telegrams with the main group 14...31 are routed. 2. Group telegrams with the main group 14...31 are not routed. 3. Group telegrams with the main group 14...31 are routed if they are entered in the filter table.
Physical telegrams	1. transmit all (not recommended) 2. block 3. filter [filter]	1. All Physical telegrams are routed. 2. No Physical telegram is routed. 3. Depending on the physical address Physical telegrams are routed.

Note: The parameter “transmit all” for Group telegrams and Physical telegrams is intended only for testing purposes and should not be set for normal operation.

8.6. SUB LINE



Picture 10: Subline (KNX TP) configuration setting

Note: *If the parameter “Send confirmation on own telegrams” is set to “yes”, with sending any own routed telegram the EWT-KNXIPTPRT will systematically send an ACK.*

ETS Text	Selection [Factory default]	Comment
Telegram routing	Group: filter, Physical: block Group and Physical: filter Group: route, Physical: filter Group and Physical: route configure [Group and Physical: filter]	- <u>block</u> : no telegrams are routed. - <u>filter</u> : only telegrams entered in the filter table are routed. - <u>route</u> : all telegrams are routed. - configure : the following parameters can be set manually.
Group telegrams: Main group 0...13	1. transmit all (not recommended) 2. block 3. filter [filter]	1. All Group telegrams are routed. 2. No Group telegram is routed. 3. Only Group telegrams entered in the filter table are routed. ETS produces the filter table automatically.
Group telegrams: Main group 14...31	1. transmit all (not recommended) 2. block 3. filter [filter]	1. Group telegrams with the main group 14...31 are routed. 2. Group telegrams with the main group 14...31 are not routed. 3. Group telegrams with the main group 14...31 are routed if they are entered in the filter table.
Physical telegrams	1. transmit all (not recommended) 2. block 3. filter [filter]	1. All Physical telegrams are routed. 2. No Physical telegram is routed. 3. Depending on the physical address Physical telegrams are routed.
Physical telegrams: Repetition if errors on subline	1. no 2. up to 3 repetitions 3. one repetition [up to 3 repetitions]	Transmission error (e.g. missing receiver) after sending a Physical telegram on the subline: 1. Physical telegrams are not repeated. 2. Physical telegrams are repeated up to 3 times.

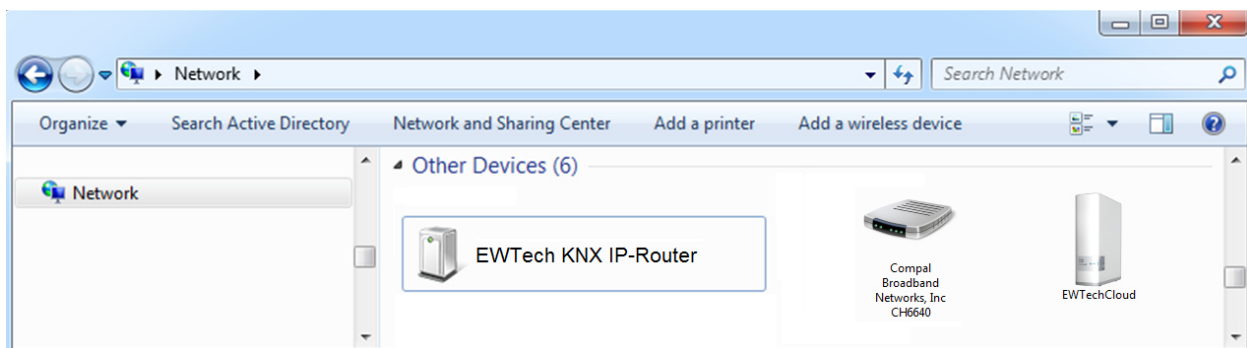
		3. Physical telegrams are repeated only once.
Group telegrams: Repetition if errors on subline	1. no 2. up to 3 repetitions 3. one repetition [up to 3 repetitions]	Transmission error (e.g. missing receiver) after sending a Physical telegram on the subline: 1. Group telegrams are not repeated. 2. Group telegrams are repeated up to 3 times. 3. Group telegrams are repeated only once.
Telegram confirmation on subline	1. if routed 2. always [if routed]	1. Routed telegrams are confirmed on the subline (own ACK). 2. Each telegram on the subline is confirmed.
Send confirmation on own telegrams	1. yes 2. no [no]	1. Every telegram on the subline is confirmed with its own ACK (from the media coupler). 2. No confirmation with own ACK
Configuration from subline (KNX TP)	enable disable [enable]	If disabled, then the ETS download to the EWT-KNXIPTPRT can occur only via IP (main line).

9. WEB FRONT-END

9.1. ACCESSING THE DEVICE

To download the firmware into the device and/or to adjust the tunnelling addresses please use the Web front-end. To access the device, it has to be opened as a Microsoft Windows (Version 7 or higher) UPnP network device. Alternatively, for this purpose also the IP address and the MAC address as URL base in the web browser can be used.

9.1.1. VIA THE WINDOWS NETWORK WITH UPNP



Picture 13: UPnP network device

In the event that the network device is not visible a manual restart is recommended. Then wait until the device gets visible in the list of network devices. If it is still not visible make sure that the UPnP function of the network is enabled.

9.1.2. VIA THE HOST (MAC ADDRESS)

Name resolution is mandatory to communicate with the EWT-KNXIPTPRT via the Host name. This is only possible if NetBIOS is active. NetBIOS is installed by default on Windows systems and Linux systems with Samba. The MAC address is printed on a label of the EWT-KNXIPTPRT housing. Use this MAC address without brackets [] as described here:

[http://knx-iprt-\[XX\]\[YY\]\[ZZ\]:8080/](http://knx-iprt-[XX][YY][ZZ]:8080/)

[XX] = byte 4 of the MAC address

[YY] = byte 5 of the MAC address

[ZZ] = byte 6 of the MAC address

Example:

- The MAC address is “**D0-76-50-11-22-33**”.
- Enter the URL “**http://knx-iprt-112233:8080/**” into the web browser’s address bar.

9.1.3. VIA THE IP ADDRESS

Example:

- The **EWT-KNXIPTPRT** has an IP address of “**192.168.1.32**”.
- Enter the URL “**http://192.168.1.32:8080/**” into the web browser’s address bar.

9.2. DEVICE INFO

The **Device Info** tab is the first tab you might see when you reach the Web front-end. Here you get all general information about the current settings of the device.



Picture 14: Device info

9.3. KNX

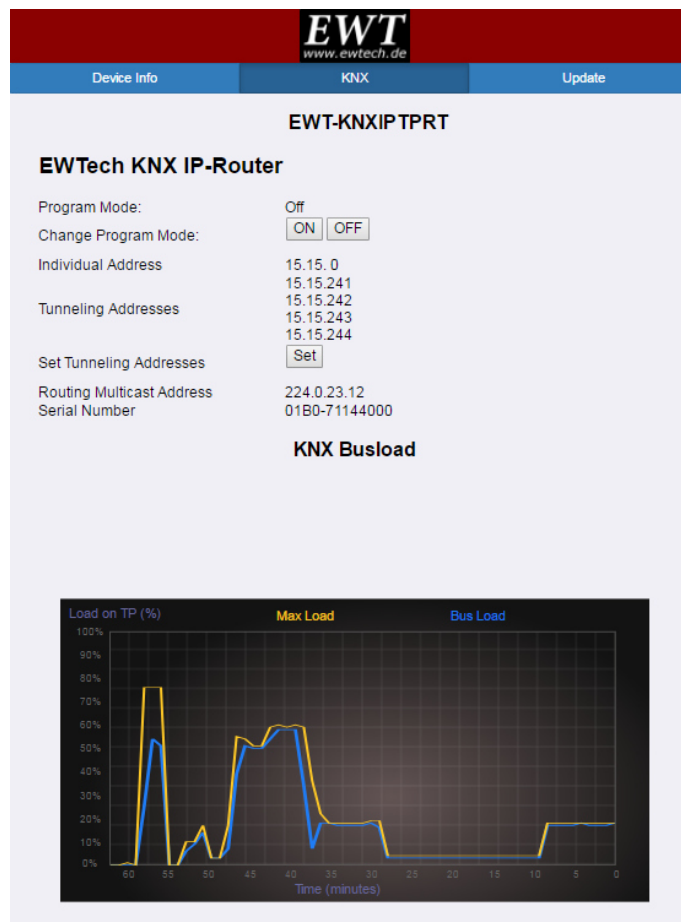
Under the KNX tab the “Program Mode” of the EWT-KNXIPTPRT can be turned “On” or “Off”.

This function is similar to the programming button function. With this the regarded device

is easy to distinguish from other interfaces in the same IP network. It can also be noticed what the particular device is currently processing (after a change in the settings, for example).

With the “Set” button (and the ETS) it is possible to set the tunnelling addresses (additional physical addresses). Moreover, here the routing multicast address, the serial number of the device and a last 60-minutes KNX bus load diagram are visible. The red curve shows the maximum and the green one indicates the average bus load on the TP side of the EWT-KNXIPTPRT.

To see the curves, make sure that your web browser supports scalable vector graphics SVG).

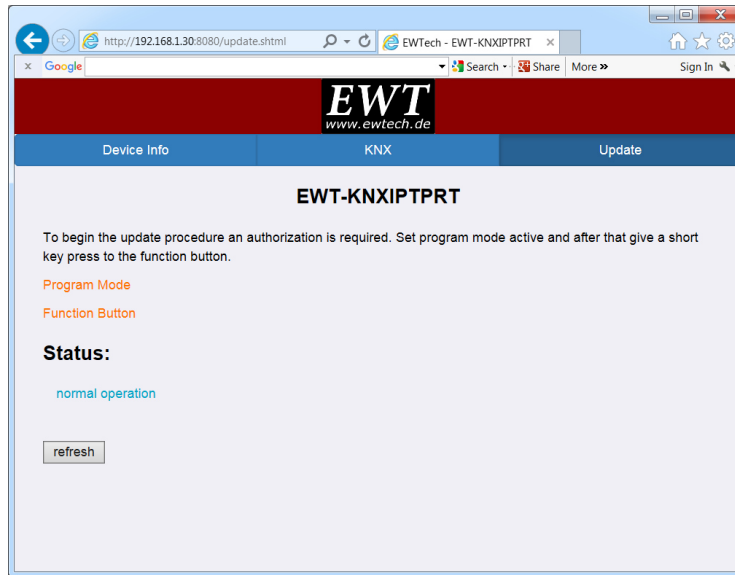


Picture 15: KNX

9.4. UPDATE

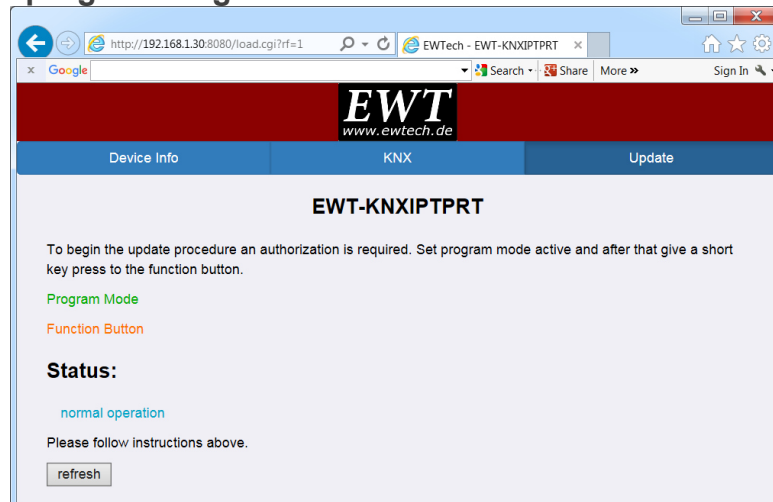
Under the **Update** tab the firmware of the device can be updated. If the device is in “Normal Mode”, proceed with following steps 1 to 5. If the device is already in “Boot Mode”, follow the instructions shown in the Web front-end and continue with step 3 (refresh, request update).

Step 1: Open the Update tab of the Web front-end.



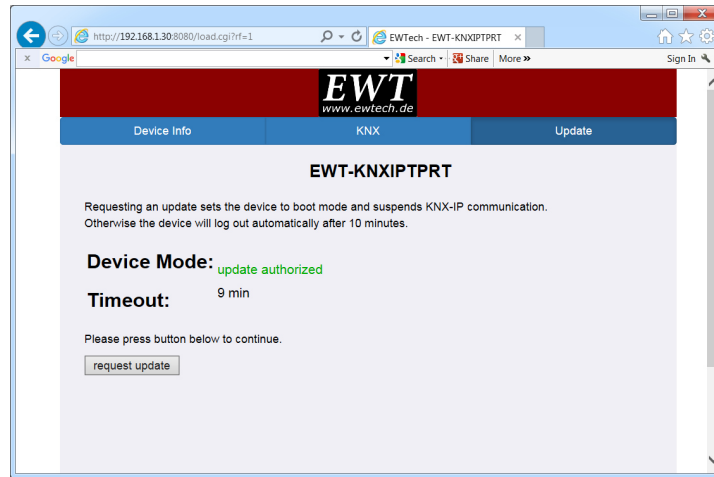
Picture 16: Update

Step 2: Either use the “Change Program Mode” function in the KNX tab or press the programming button once.



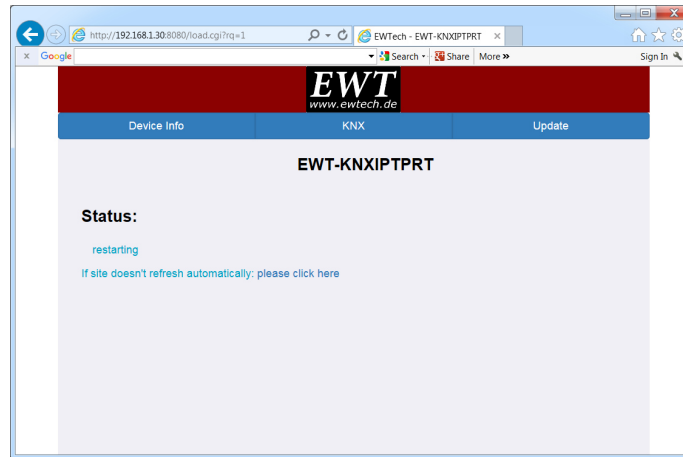
Picture 17: Program mode

Step 3: After the “Program Mode” is turned to “On” give a short key press to the function button. Then the “refresh” button in the Update tab needs to be pressed. Alternatively, refresh the browser.



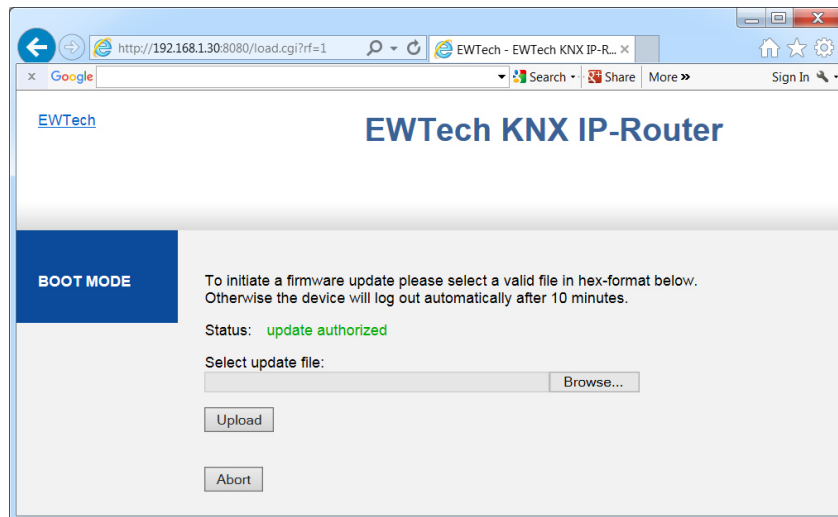
Picture 18: Update authorized

Step 4: Then the “request update” button appears. Press it to select the update file and enter “Boot Mode”.



Picture 19: Request update

Step 5: The device now switches to “Boot Mode”. The update file can be selected and uploaded. Pressing the Abort button cancels the firmware update procedure and the device exits the “Boot Mode”.

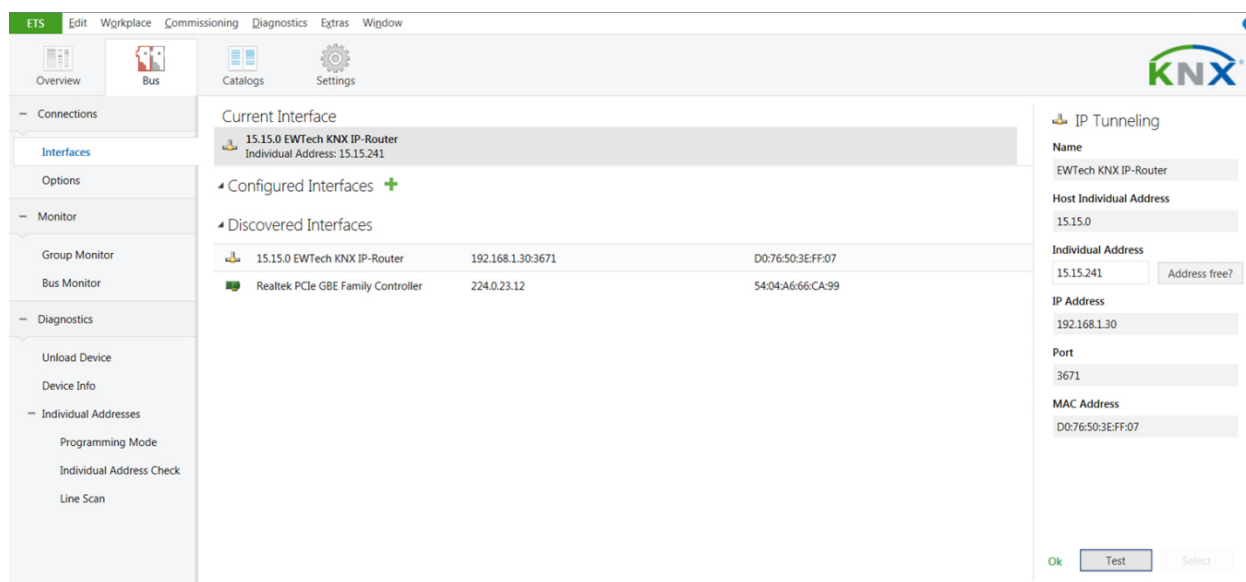


Picture 20: Select update file

9.5. TUNNELING ADDRESSES (ADDITIONAL PHYS. ADDRESSES)

According to the host's physical address assignment the first additional physical address of the **EWT-KNXIPTPRT** can only be set with the ETS. **Please make sure:** The additional physical addresses for tunneling and the host's physical address have to be different.

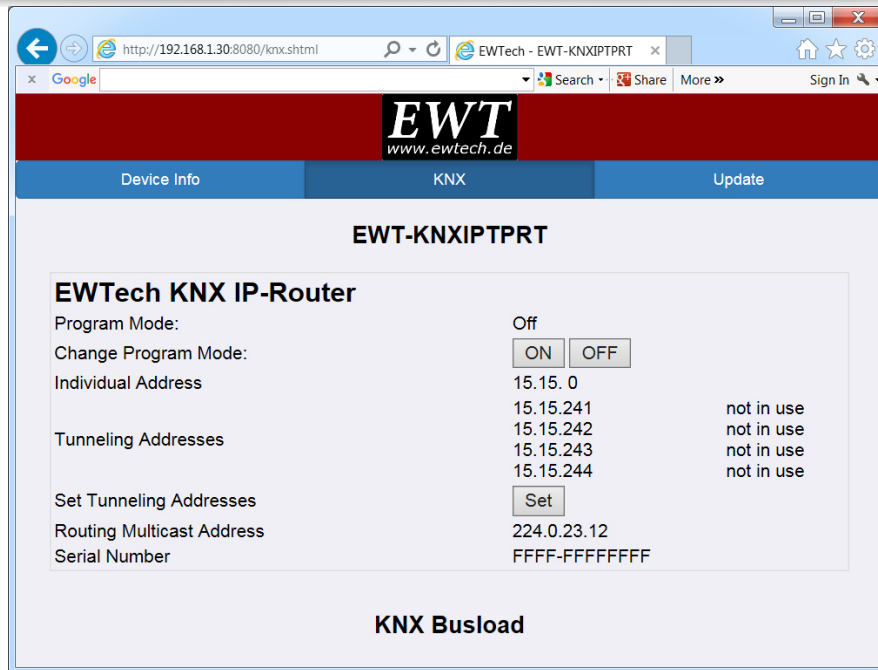
Step 1: Open the Bus tab in the ETS and select the EWT-KNXIPTPRT as the "Current Interface". In the "IP Tunneling" window the already assigned host physical address can be read.



Picture 21: First additional physical address (tunnelling address)

Step 2: Type the additional physical address into the "Individual Address" field. Click on the "Test" button. If the green **Ok** appears, the first tunneling address is already set. In this example, it is set to "15.15.241".

Step 3: Now open the KNX tab of the Web front-end. Click on the "Set" button to change the remaining three tunneling addresses basing on the first tunneling address as follows.



Picture 22: Additional tunneling addresses

10. STATE OF DELIVERY

The **EWT-KNXIPTPRT** is delivered with the following default factory settings:

Marking/Design	EWT-KNXIPTPRT
Physical address	15.15.0
Physical address for tunneling connections	15.15.241
	15.15.242
	15.15.243
	15.15.244
<i>IP configuration</i>	
IP address assignment	DHCP/AutoIP
IP routing multicast address	224.0.23.12
<i>IP (IP Main line to KNX TP Subline)</i>	
Group telegrams (main group 0...13)	Filter
Group telegrams (main group 14...31)	Filter
Physical telegrams	Filter
<i>KNX TP (KNX TP Subline to IP Main line)</i>	
Group telegrams (main groups 0...13)	Filter
Group telegrams (main groups 14...31)	Filter
Physical telegrams	Filter
Physical: Repetition if errors on KNX TP	up to 3 repetitions
Group: Repetition if errors on KNX TP	up to 3 repetitions
Telegram confirmations on KNX TP	if routed
Send confirmation on own telegrams	no
Configuration from KNX TP	enabled

11. TECHNICAL DATA

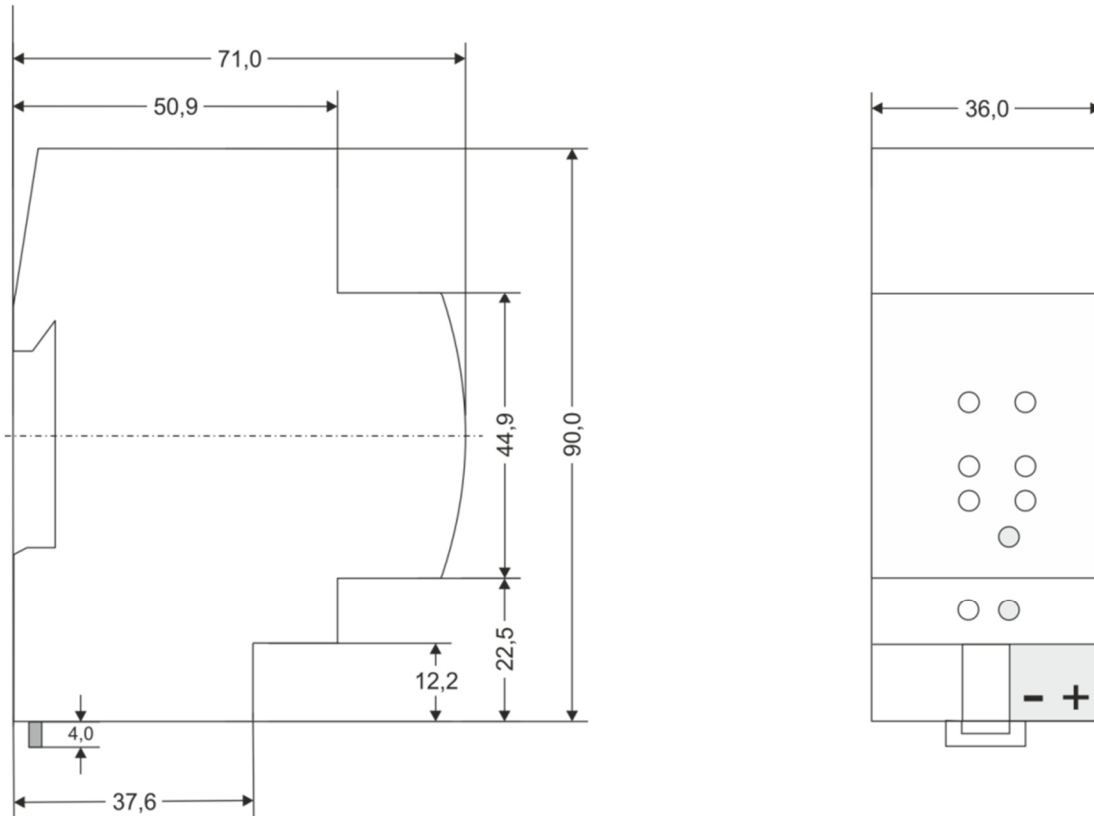


Warning: device may not be connected to 230V!

Marking/Design	EWT-KNXIPTPRT	
Current consumption	< 40 mA	
Connections	IP (line): RJ45 socket for 100 Mbit and 10 Mbit BaseT, IEEE 802.3 networks KNX TP line: KNX TP connector (red/black), screw less, for single-core cable Ø 0.6...0.8 mm	
LED Display elements	Bus State Programming	Telegram Traffic Routing (GA and PA)
Control elements	Function button, Program button	
Mounting	35 mm top-hat rail (TH35) according to IEC60715	
Protection type	IP20 according to IEC60529	
Pollution degree	2 according to IEC60664-1	
Protection class	III according to IEC61140	
Overvoltage category	II according to IEC60664-1	
Approbation	KNX-certified according to ISO/IEC14543-3	
CE Marking	According to low voltage and EMC guidelines Compliance with EN50428, EN50581, EN61000-6 and EN62479	
Power supply	Safety extra low voltage, 21...30V DC (SELV)	
Housing color	Plastic PA66 housing grey	
Dimensions	H = 90 mm, W = 36 mm (2 modules), D = 71 mm Mounting depth = 64 mm	
Weight	70 g	
Device temperature	Working temperature: -5...45 °C Storage temperature: -20...60 °C	
Ambient humidity	5...93 %, non-condensing	

12. TECHNICAL DRAWINGS

All dimensions shown here are specified in mm. The device width is 2 modules at 18 mm.



Dimensions in mm
Tolerance: -0,5 mm/DIN 16742

Picture

23: Dimension drawings

13. LEGAL NOTICE

Lw IP is used in developing the **EWT-KNXIPTPRT**.

Lw IP is licensed under the BSD license.

Copyright (c) 2001-2004 Swedish Institute of Computer Science.

All rights reserved.

Providing that the following conditions are met redistribution and use in source and binary forms, with or without modification, are permitted:

1. Redistributions of the source code must retain the above copyright notice, this list of conditions and the following disclaimer.
2. Redistributions in binary form must reproduce the above copyright notice, this list of conditions and the following disclaimer in the documentation and/or other materials provided with the distribution.
3. The name of the author may not be used to endorse or promote products derived from this software without specific prior written permission.

THIS SOFTWARE IS PROVIDED BY THE AUTHOR ``AS IS AND ANY EXPRESS OR IMPLIED WARRANTIES, INCLUDING, BUT NOT LIMITED TO, THE IMPLIED WARRANTIES OF MERCHANTABILITY AND FITNESS FOR A PARTICULAR PURPOSE ARE DISCLAIMED. IN NO EVENT SHALL THE AUTHOR BE LIABLE FOR ANY DIRECT, INDIRECT, INCIDENTAL, SPECIAL, EXEMPLARY, OR CONSEQUENTIAL DAMAGES (INCLUDING, BUT NOT LIMITED TO, PROCUREMENT OF SUBSTITUTE GOODS OR SERVICES; LOSS OF USE, DATA, OR PROFITS; OR BUSINESS INTERRUPTION) HOWEVER CAUSED AND ON ANY THEORY OF LIABILITY, WHETHER IN CONTRACT, STRICT LIABILITY, OR TORT (INCLUDING NEGLIGENCE OR OTHERWISE) ARISING IN ANY WAY OUT OF THE USE OF THIS SOFTWARE, EVEN IF ADVISED OF THE POSSIBILITY OF SUCH DAMAGE.

14. FAQ

Q: The firmware update process has finished successfully but the device doesn't react now.

A: Turn the power off and on manually (dis-/reconnect bus line). Try to restart it this way.

Q: Is it Ok to connect and disconnect the Ethernet quickly?

A: No! You shouldn't do this. To observe, the LAN status LED will light green for a few seconds and then the device will reset.

Q: What does the programming LED show when the Ethernet cable is not connected?

A: As long as the Ethernet cable is not connected properly the programming LED blinks red.

Q: LED 2 is blinking green continuously. Why?

A: This indicates that the **EWT-KNXIPTPRT** is in "Boot Mode". For more information about this mode and how to change back to "Normal Mode" please refer to [Boot Mode](#).

Q: I have disabled DHCP and assigned a correct IP configuration to the **EWT-KNXIPTPRT**.

But I cannot reach the Web front-end anymore. Why?

A: Manually reset the **EWT-KNXIPTPRT** and try again. For more information about changing the configuration of the IP network please refer to [IP Configuration](#).

Q: I tried to reach the Web front-end of my **EWT-KNXIPTPRT** but I wasn't successful. What can I do?

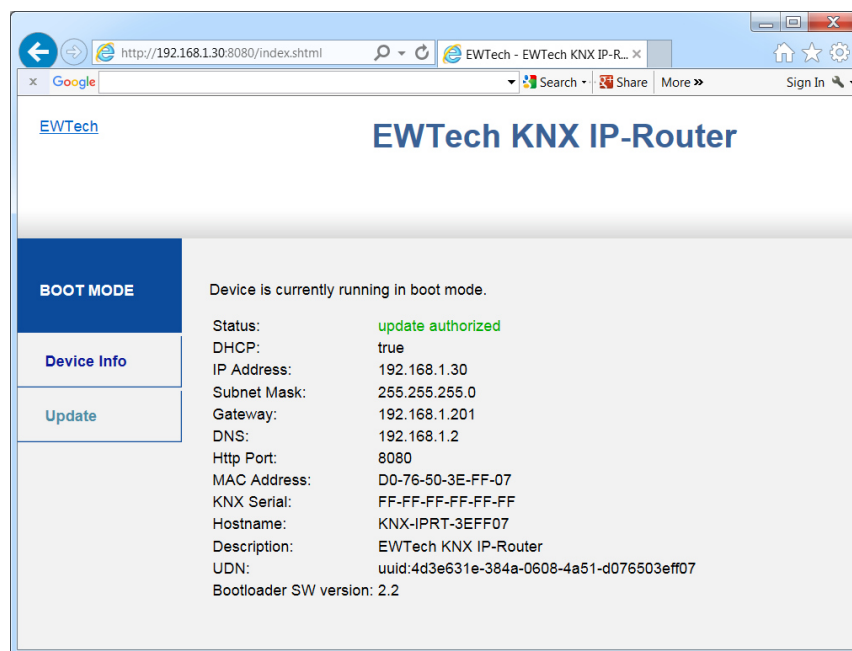
A: Make sure the "http://..." matches your device IP along with the port address "8080".

Or type the MAC address into the browser's address bar in exactly the way as

explained (see [Via the MAC Address \(IP Address is not known\)](#)). Then wait (for about 5-15 seconds), refresh your browser and try again.

Q: Is it possible to reach the Web front-end when the device is already in “Boot Mode”?

A: Yes, it is. The [Web Front-End](#) is accessible in both “Normal Mode” and “Boot Mode” (see [Update](#)). In this case the Web front-end will look like illustrated next. You can use the **Update** tab to update the firmware and/or to exit the “Boot Mode”.

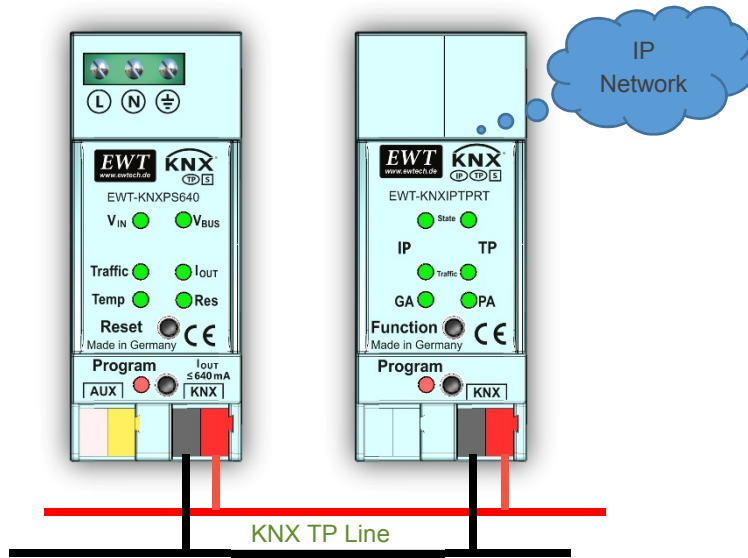


Picture 24: Boot mode

Q: I could reach the Web front-end. But when I try to use its tabs or options again my browser only shows a connection error to me. What can I do?

A: Refresh the browser window. The Web front-end will show up again.

15. INSTALLATION EXAMPLE AND MAINTENANCE



Important Note:

- Protect the device from moisture, dirt, and damage
- The device needs no maintenance
- If necessary, the device can be cleaned with a dry cloth
- In the case of damage, no repairs may be carried out by unauthorized personnel

Further information available at www.ewtech.de