

B.E.G.**LUXOMAT® net**

RC-plus next N 230 KNXs-DX 230

Prod.No. 93528 EAN: 4007529935284

- Voltage: via KNX BUS
- Dimensions: 121 x 71 x 85 mm
- Typ. power input: 12 mA

Order data

Designation	Colour	Art.No
RC-plus next N 230 KNXs-DX 230	black	93528

Accessories

Designation	Colour	Art.No
BLE-IR-Adapter	black	93067
IR-Adapter for Smartphones	black	92726
IR-PD-KNX	-	92123
IR-PD-KNX-Mini	-	93398
Wire basket BSK (Ø 164 x 143 mm)	white	92467
Inside corner socket RC-plus next	white	97005
Outside corner socket RC-plus next	black	97024
Outside corner socket RC-plus next	brown	97014
Outside corner socket RC-plus next	white	97004
Outside corner socket RC-plus next	silver	97043

Pole holder	stainless steel	93220
Wall holder	white	93222
Wall holder	anthracite	93221
Blinds RC-plus next		32697

Technical data

Voltage:	via KNX BUS
Dimensions:	121 x 71 x 85 mm
Typ. power input:	12 mA
Detection area:	horizontal 230° (Wall mounting) max. 20 m across max. 6 m towards
Range:	max. 4 m anti-creep protection
Monitored area (tangential movement):	800 m ² / 2.5 m mounting height
Mounting height min./max./recommended:	2 m / 5 m / 2.5 m
Degree / class of protection:	IP54 / Class III
Impact strength:	IK03
Temperature measurement range:	-20 °C to +45 °C
Ambient temperature:	-25 °C to +55 °C
Housing:	polycarbonate, UV-resistant
Number of light sensors:	1
Material color:	black mat, similar to RAL9005
Number of PIR sensors:	3
KNX TP 256:	Yes
KNX Secure:	Yes
Orientation light:	5 - 100 % / OFF / 1 min - 255 min
Night light:	5 - 100 %
Brightness set value:	5 - 2000 Lux

Product information

KNX occupancy detector with integrated KNX bus connector

KNX Secure ready

Integrated downlight with orientation or a night light (RGB) function

HCL/RGB control

Parameterisation from ETS 5 for integration into KNX systems

Individual adaption of detection sensitivity for each PIR sensor

PIR sensors can be deactivated individually

Direction of movement can be identified

Mixed light measurement using internal and remote (optional) light sensors

Intelligent semi-automatic mode, occupancy-independent regulating mode (photoelectric switch), full automatic mode

1 x Light (for regulating or switching), 1 x slave output, 3 separate HVAC-blocs

Regulation of up to three lighting groups using offset (external influence possible)

Short presence, self-adjusting follow-up time, corridor function

Various locking functions

Soft-start

Two logic modules

Recall of light scenes

Deactivatable status indicators

The product database for import into the ETS database can be downloaded from the B.E.G. homepage.

Anti-creep zone

Detection area can be extended thanks to master-slave-mode

Extensive optimization options for light measurement

Measured light value is communicated to the bus

Adaption of dimming curve

Bidirectionally remote control-capable with the IR adapter and the B.E.G. smartphone app

PIN code

IR remote control-capable via IR remote control (optionally)

5 button remote control, programmable at choice (accessory)

Programming button (phys. address) can be operated via remote control

HVAC mode (0=automatic, 1=comfort, 2=stand-by, 3=economy, 4=antifreeze/heat protection)

Manual influence via external KNX push buttons possible

Function control (heartbeat, cyclical sending)

Occupancy simulation

Forced switch-off

Intelligent central-off function

Premonition of switch-off

Burn-in function for fluorescent lamps selectable from 1h till 100h

Behaviour upon bus voltage return definable at choice

Variable safety pause after switching off the lights

Application examples:

monitoring a whole side of a building, warehouses, ramps or garages



Accessories



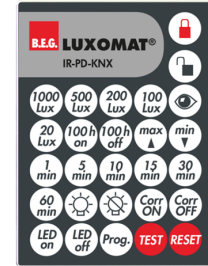
BLE-IR-Adapter
Art.No: 93067

Dimensions: 40 x 55 x 103 mm
Material color: black
Frequency: 2.4 GHz ISM band, GFSK
0.2 dBm + 5.3 dBi = 5.5 dBm



IR-Adapter for Smartphones
Art.No: 92726

Dimensions: 47 x 19 x 10 mm
Degree / class of protection: IP20
Ambient temperature: -20 °C to +40 °C



IR-PD-KNX
Art.No: 92123

Battery: 3.0 V Lithium CR2032 (inclusive)
Dimensions: 80 x 60 x 8 mm
Material color: -



IR-PD-KNX-Mini
Art.No: 93398

Battery: 3.0 V Lithium CR2032 (inclusive)
Dimensions: 57 x 35 x 7 mm
Material color: -



Wire basket BSK (Ø 164 x 143 mm)
Art.No: 92467

Dimensions: Ø 164 x 143 mm
Impact strength: IK09
Housing: coated steel basket



Inside corner socket RC-plus next
Art.No: 97005

Dimensions: 60 x 61 x 68 mm
Degree / class of protection: IP54
Housing: Housing UV- and shockresistant



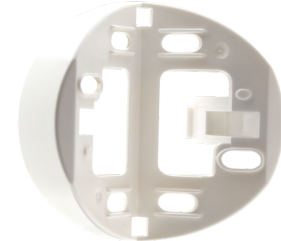
Outside corner socket RC-plus next
Art.No: 97024

Dimensions: Ø 71 x 34 mm
Degree / class of protection: IP54
Housing: polycarbonate, UV-resistant



Outside corner socket RC-plus next
Art.No: 97014

Dimensions: Ø 71 x 34 mm
Degree / class of protection: IP54
Housing: polycarbonate, UV-resistant



Outside corner socket RC-plus next
Art.No: 97004

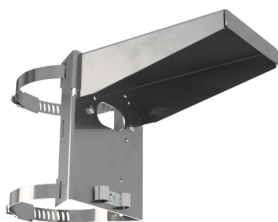
Dimensions: Ø 71 x 34 mm
Degree / class of protection: IP54
Housing: polycarbonate, UV-resistant



Outside corner socket RC-plus next

Art.No: 97043

Dimensions: Ø 71 x 34 mm
Degree / class of protection: IP54
Housing: polycarbonate, UV-resistant



Pole holder

Art.No: 93220

Dimensions: 188 x 98 x 134 mm
Housing: stainless steel
Material color: stainless steel



Wall holder

Art.No: 93222

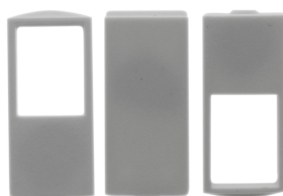
Dimensions: 188 x 98 x 134 mm
Material color: white



Wall holder

Art.No: 93221

Dimensions: 188 x 98 x 134 mm
Material color: anthracite



Blinds RC-plus next

Art.No: 32697

Housing: polycarbonate, UV-resistant
Material color: white