

Shoe Manufacturer in Greece

Nationally networked via KNX



In shops an intelligent light control is highly important

The biggest concern of the Lemonis Group, the largest shoe manufacturer in Greece, is the security of its staff, data and buildings. Next come the environmental production and the effectiveness.

In order to realise the above, the company's CEO, Mr. Francesco Lemonis, has decided to make extensive use of KNX. Before he experimented with various providers of automation products, however never to his full satisfaction. Thanks to its ease of use and the possibility to extend, he opted for KNX. Also the fact that KNX is a standardised system played a decisive role.

The main advantage of this project lies in the highly efficient facility management that was realised with KNX. Only a single person in Athens supervises several installations: the headquarters, the production site and 43 outlets. Since the implementation of KNX, energy savings of up to 25% were achieved. The operational costs could moreover be cut owing to the longer life cycle of the equipment.

Advantage of KNX in this project

- Highly efficient facility management owing to central supervision and control of the headquarters, production site and the 43 outlets
- Energy saving, slower deterioration of end devices and hence lower life-cycle costs
- Highest security for staff, data and buildings

Projectnumber: Z2/04/E

Country: Greece
Year of Construction: 2003

Area of Application

- Residential buildings
 - Family home
 - Apartment block
 - Residential care home for senior citizens
 - Residential care home for the disabled
- Functional buildings**
 - Office block / public office**
 - Commercial enterprise
 - Retail office**
 - Restaurant and Hotel
 - Cultural Cultural building (cinema, theatre, museum, etc.)
 - Clinic / hospital
 - Educational building (school, college, etc.)
 - Leisure facility (sports center, spa, etc.)
- Industrial building**
 - Other

Facilities

- Lighting**
- Shading/Light control**
- Heating, ventilation, air conditioning**
- Alarms**
- Technical monitoring**
- Energy management**
 - KNX visualisation
- Interfaces to other systems**
- Remote monitoring/-operation**
- Other application**

Scope

- Number of areas/lines: 4/47**
- Number of KNX devices: 1398**

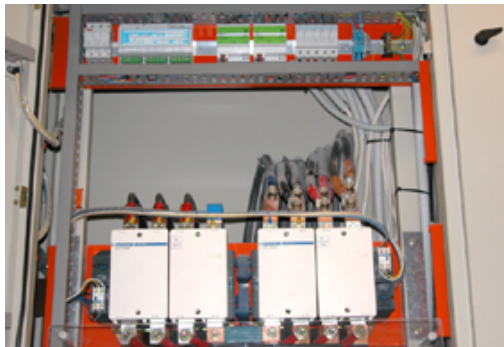


Winner:

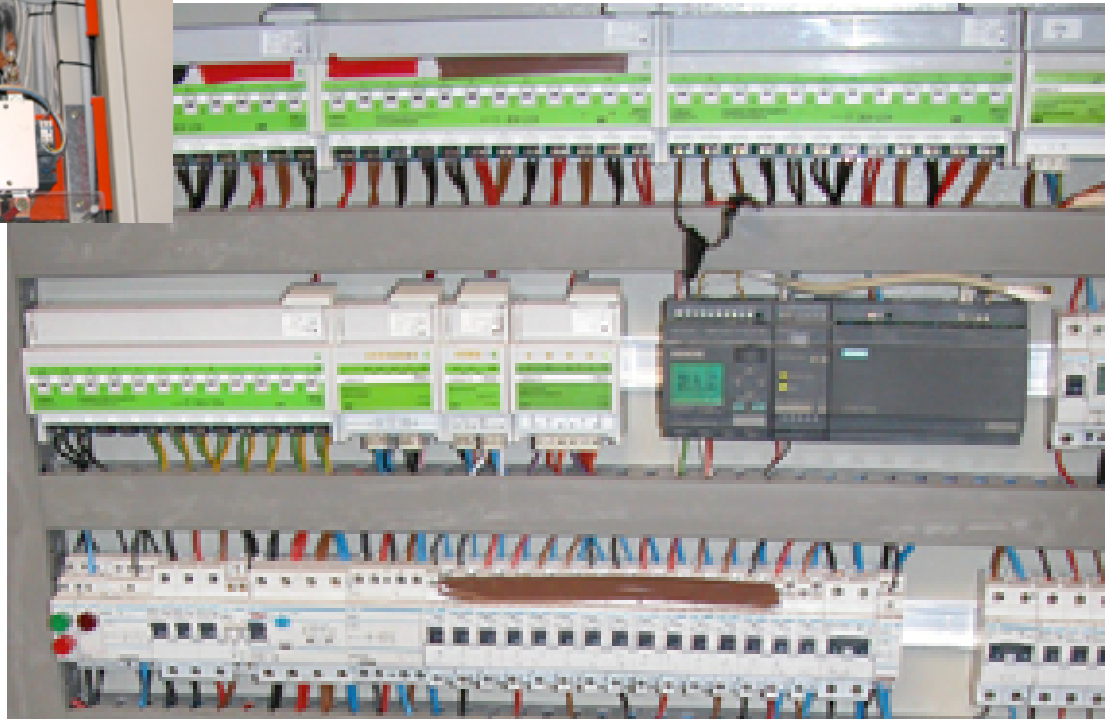
**Of second prize
KNX Award 2004**

Highly efficient facility management thanks to nation-wide network

Projectnumber: Z2/04/E



Energy distribution with supervision and measuring unit via KNX



Floor distribution board with KNX devices as well as a Siemens LOGO mini-PLC with KNX interface

Technical details

- Heat pumps, which are located on the roof, cool or heat the water needed for airconditioning. The installations are controlled via the Siemens PLC LOGO (programmable logic controllers for small applications), which is coupled via its KNX/EIB interface to the rest of the installation.
- The size of the conference rooms is modifiable via the use of separation walls. The lighting of the installation is automatically adjusted to the size of the room. A current measurement at the LCD-projector ensures that the electrical screen is automatically positioned.

▼ For the largest shoe manufacturer in Greece, with its 43 outlets, headquarters and plant, security and efficiency come first. Most of the technical systems like HVAC, shutters/blinds or anti-intrusion are included in the network and are centrally supervised and controlled in Athens. Also special applications like audio/video, fire protection and access control systems are linked via gateways to KNX.

Data are transported on the TCP/IP run network of the company. The system can be accessed from anywhere by means of a web browser accessing the data on the central server via the intranet. The central supervision and control is automated to a large extent. Error messages and suspect events are displayed on the screen and are logged.

The controlled functions are adapted to the working hours and the day schedule in order to save energy. Owing to the KNX network, the same sensors can be used for various applications, e.g. a presence detector not only to control the lighting but also for alarm purposes and for heating

control. The countrywide network especially serves the building management in this project. Real time consumption data are stored, error message logs are created and event statistics are generated. In this way, processes and functions can be analysed, their efficiency improved and in turn security can be increased and costs cut.

The reconstruction started in October 2002. Even with the high level of automation achieved, owing to KNX the cabling effort was relatively moderate. This KNX project is one of the largest ever-realised in Greece. Already now, the Lemonis group has decided to link further installations – including production sites – with KNX. ▲▲

Involved companies

Building owner:

Lemonis Group, Athens

KNX system integrator:

GDS, Digital systems Design and Application, Building Control, Athens