

ETS4 for Experts

**New ETS4 Functions,
improved Workflows**

New ETS4 Functions, improved work procedures for KNX experts

An important goal during ETS4 development was to increase overall performance during project editing and optimize the user's work flow. This is reflected in the ETS4 program in two ways:

- a) Improved performance of individual, frequently used work steps (e.g. KNX product data import);
- b) Introduction of new ETS4 functions, previously unavailable in ETS3.

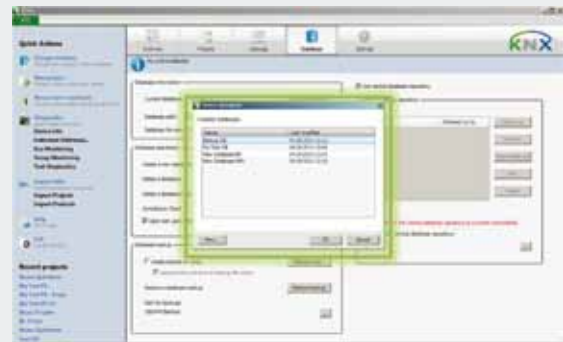
The underneath list gives examples of some of these ETS 4 functions, if possible illustrated with a picture. The listed examples are not exhaustive but give a good impression of the new possibilities in ETS4.

Change of database

1 Database

Advantage compared to ETS3

Change of database is now performed direct in ETS4 user interface, a close and restart with preceding selection of other database as in ETS3 is not necessary anymore. With this a switch to other data or projects will be speed up significant.



Central database repository

2 Database

Advantage compared to ETS3

Constantly growing up KNX projects requires a specific work schedule. The possibility to store ETS4 projects on a central server repository is a big workflow optimization. Several editors can access these data and see which editor is actually editing the data (the project is here in status "checked out"). With ETS3 it was only possible via direct conversation between the editors to define editing rules.



Automated database backup

3 Database

Advantage compared to ETS3

Data backups are a mandatory requirement on each IT infrastructure to save performed working results extra. The ETS4 is optimizing this issue via possibility to do this manually during project editing or automatically / on user request when exiting the ETS4.



KNX project export

4 Data exchange

Advantage compared to ETS3

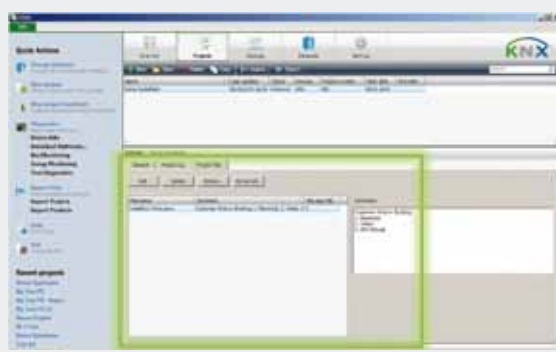
KNX installation getting bigger and bigger, additionally they linked with other automation systems. This requires an easy data exchange. A simple example is a visualization system which directly displays the status of a KNX project in the main control level. With the new defined XML based ETS4 im-/ export format this is easy to perform. In contrast to ETS3, where this access was only limited, now all data of ETS4 exported projects can be accessed by reading them directly.

Extra project data

5 Projects

Advantage compared to ETS3

Part of project documentation is not only the project file itself, more and more extra data like CAD drawings, special product documentation or installation manuals are part of it. Possibility to lose data if they are only hand over separately must not be mentioned explicitly. No need to explain to keep them also originally during the project life cycle. Beginning with ETS4 it is possible to store and attach such data directly with the project. Via a dialog files can be added to the ETS4 project, deleted or extracted for viewing purposes.



Detailed log descriptions

6 Projects

Advantage compared to ETS3

The documentation of performed working steps is an important gadget in project life. Extended log descriptions, which will be created by the installer independently is a pleasure. The ETS4 allows here a better structure, with a separate definition of heading description and the corresponding content.

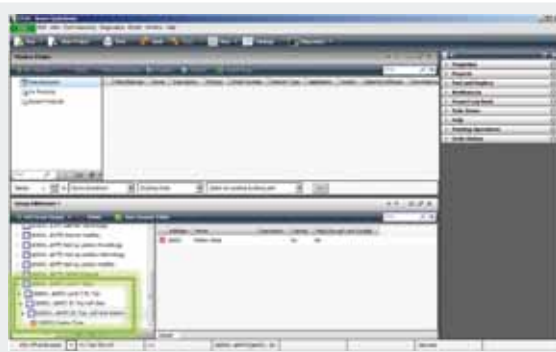


Free group address structure

7 Projects

Advantage compared to ETS3

2 and 3 level group addresses are well known from ETS3. But not all the time this three level limitation reflects the real installation requirements, e. g. if an installation needs more granular group address leveling. With ETS4 it is possible to define a group address structure by yourself in nearly each level depth. Additionally ETS4 allows the usage of entire 16 bit group address space.



Embedded parameter dialog

8 Projects

Advantage compared to ETS3

Parameter dialogs are the central control for configuration of KNX device properties. Because of this it is important to access them fast for editing or getting a fast overview about current status of parameterization. With ETS4 the parameter dialogs are embedded directly in ETS4 window (e.g. topology) and can be displayed easily via click them (for sure also several at the same time). If required a change compared to the device default setting will be shown via an appropriate icon. In ETS3 the latter is not possible at all, the parameter dialogs itself must be called here by several selections spread over various windows.

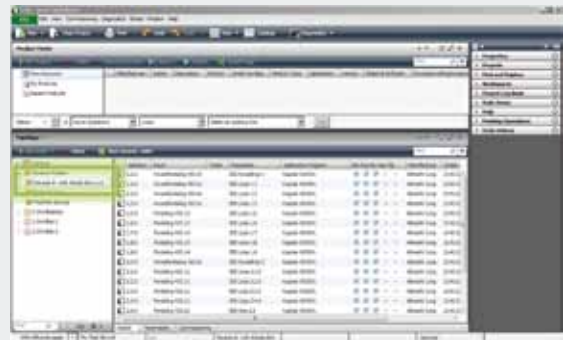


Dynamic folder

9 Projects

Advantage compared to ETS3

Visualization of devices after defined properties is a classic work item within project creation. On this the so called filter criteria are always different and appear sometimes in combination (e.g. display all couplers of a project with a special naming convention). On ETS4 the "dynamic folders" allow a nearly free listing of window content for the installer needs. These folders (and there display criteria) can also be stored. In ETS3 this is only possible via filtering in columns, but without combination of selection criteria.



Windows explorer behavior in ETS4

10 User Interface

Advantage compared to ETS3

Behavior of windows explorer is well known to most ETS users. Even better is now, that this behavior is taken over nearly in ETS4, e.g. to reach via double-click in a window the underlying or higher level (e.g. main groups ▶ underlying middle groups). In ETS3 this is not possibly at all. With this a significant improve of editing performance will be achieved.

After the detailed enumeration here yet a next overview about new/ improved ETS4 functions, in each case sorted after its corresponding subject.

Bus Access

- Parallel download in different, via IP connected „Twisted Pair“ segments possible
- Bus access also in free of charge available ETS4 DEMO

User interface

- License overview on first view after ETS4 start
- Fast switching of projects via TAB bar (if more than one project is open)
- Multi monitor support, distributable ETS4 windows
- KNX News always in access; naturally able to switch off
- Quick action bar for important functions, such as open last recent used project (also if data base is currently not open)
- Comfortable search and filter in product catalogue, product searcher and in all views
- Keyboard and menus better configurable
- Fast navigation/ view switching between objects an assigned group addresses (and vice versa)
- ...

Project editor/ analysis

- Powerful folder, project overall view/ editing possible
- New defined „To Do“ list, with to be completed project elements which can be dragged directly in or popped up automatically on click
- New folder for "recent used" products available
- Product/ project import wizard with new options
- Detail view of filter results/ multiple selections on one click
- Bus/ group monitor with powerful and free configurable filter-/ record capabilities
- ...

Project documentation

- Basically smaller project export files
- Single device report possible
- Own picture for reports can be defined

System support ETS4

- Additional support of Windows 7 64 Bit; Windows 2003/2008 Server each with 32 or 64 Bit; of course also on separate KNX Falcon 2.0
- New and easy diagnosis wizard for error recognition
- Manual or automatic driven ETS4 online update