

2-2004

Konnex journal



Konnex Association



■ **KNX –**
the Global Standard in Practice





Dear Readers,

at the time of the publication of the first 2004 edition of the Konnex Journal, a lot of long-awaited KNX projects were about to materialise, not only of the Konnex Association or EIBA but also of its member companies.

First of all, at the Light and Building Fair EIBA successfully launched the new generation of the ETS' software in the form of the ETS Starter (for beginners) and ETS Professional (for trained users).

In view of the new licensing system, which is explained in more detail in one of the articles of this Konnex Journal, EIBA also decided to again centralise the sale of the ETS software and the ETS hotline in the Brussels headquarters.

In the meanwhile, a CD-ROM containing the before-said ETS versions should have found its way to the mailbox of the visitors at the Konnex L+B booth or existing ETS licensees, of which many have in the meanwhile migrated to the new version, which undoubtedly increases the speed of their KNX/EIB planning and commissioning work.

Secondly, quite a number of KNX product novelties saw the light at the Frankfurt fair, to which many of the articles in this issue are devoted.

At the Light and Building, Konnex Association proudly announced the fact that its KNX standard had formally been approved in December 2003 as part of the EN 50090 series. In this Journal, the text of the press release that was jointly issued by Konnex together with European Committee for the Standardisation of electro-technical equipment; CENELEC, is published.

Last but not least, the first true KNX Award for the best KNX installation and for the best student project was granted respectively to the Egemin project of the pharmaceutical plant in Belgium and the 3D KNX Visualisation project realised by the University of Dortmund.

Konnex and EIBA however never rest on their laurels: in the months after the L+B fair, the Konnex Certification Department successfully inspected two new training centres in Greece and the Russian Federation, worked hard at the finalisation of the certification procedure for EHS compatible products and published a fully overhauled version of the German standardised training documentation. The Konnex Scientific Conference and the KNX Tutorial workshop for new and potential Konnex members, both in Deggendorf (Germany) were organized. The Marketing department was present at many conferences (a.o. Connected Homes in London), fairs (a.o. Electro-technical fair in Katowice and the Matelec in Madrid) and also attended the Young Installers Competition as held in Copenhagen, where for the first time the participants had the task of creating a project with ETS (see relevant article Page 14).

Projects in the pipeline:

- the introduction of a new logo for certified partners based on the KNX trademark from beginning of 2005 onwards;
- the publication of the updated training documentation in other European languages;
- the updating of the computer based training included on the ETS CD-ROM;
- the launch of the new generation of the EITT conformance test software.

Find out the results of these novelties in the next issue of the Konnex Journal, scheduled for Spring of next year!

Enjoy reading this issue!

Joost Demarest

Scientific Forum

3 2004 KNX Scientific Award Winner

Projects

4 State-of-the Art Management

Projects

6 Olympic Dimensions

Software

7 ETS 3 Licensing

Ratification

8 Setting a New Milestone

Products

- 9 Domestic Appliances under Control
- Flexible Room Automation
- 10 Now the Bus Calls the Tune
- Weather Station with Teach-in Object
- 11 Room Automation with Presence Detector
- 12 Modern User Control Philosophy
- 13 The Pocket Service Tool
- KNX Configuration Made Easy

Forum

14 European Competitions of Young Electricians

User

15 In Line with Konnex

Dialogue

16 Contact Editorial Team

7

Software
ETS 3 Licensing



8

Ratification
Setting a New Milestone

2004 KNX Scientific Award Winner

Technical University Dortmund the winner with 3D visualisation

In order to reward the work of the Scientific partners, every two years at the Light and Building Fair Konnex Association also grants the KNX Scientific Award for best thesis.



After quite some deliberation, the majority of the Award jury decided to grant the 2004 prize to a student project, in which the worlds of three-dimensional visualisation and KNX are bridged.

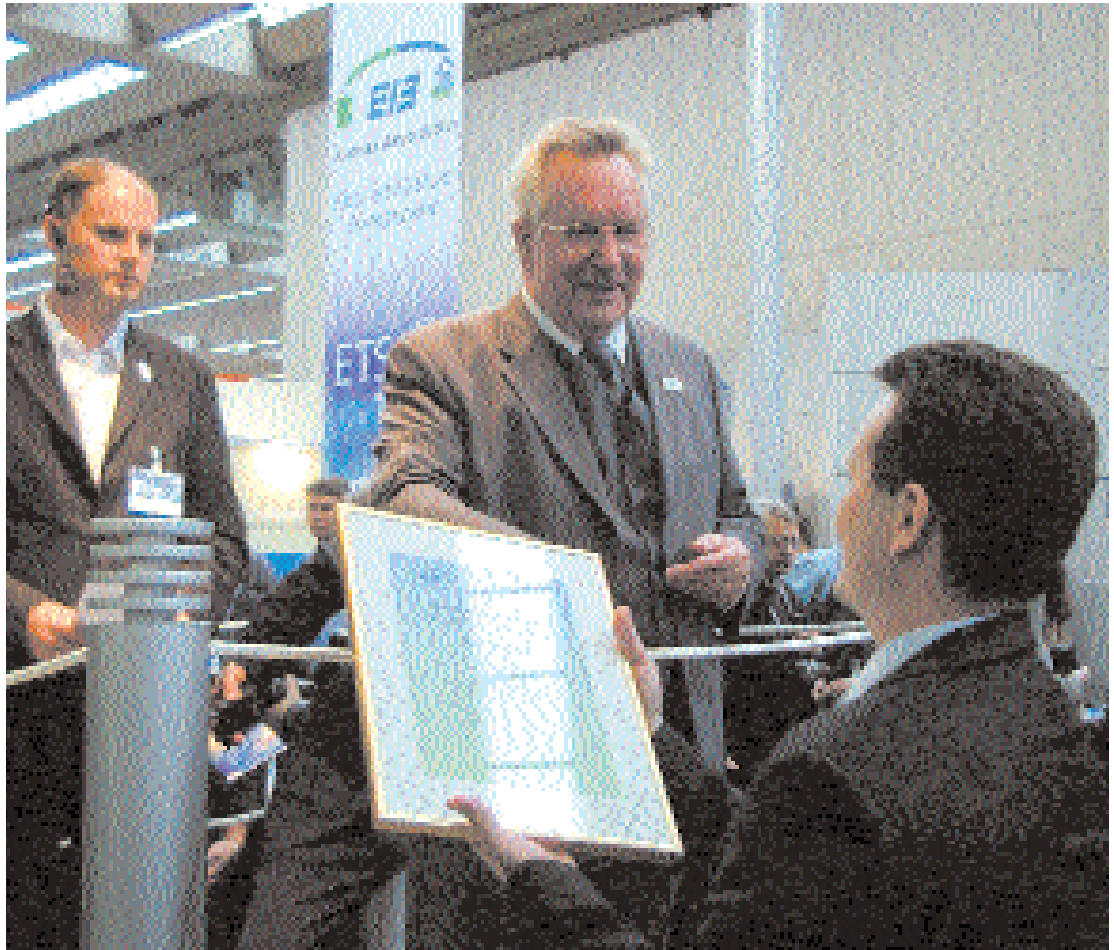
This original idea was realised by modelling frequent KNX/EIB functions in a 3D visualisation environment developed at the submitting university. On the basis of these functions existing KNX/EIB devices can in turn be three-dimensionally modelled and integrated into a virtual project. For his work, Mr. Eckardt created an imaginary single family home. Via an included link to the EIB OPC server and a connection to a scale model of the house, manipulations in the 3D visualisation could not only be seen in the virtual but also in the real world.

The worked out concept offers the possibility to visualise the planning of a KNX/EIB installation before actually commissioning it. In this way, the operational comfort of the real installation can be virtually checked before implementation. This work provides a splendid basis for use, e.g. during the development of new bus devices, during training and

presentations. It could therefore be most suitable as marketing and sales tool.

In view of the above, the Konnex jury therefore proudly granted this year's KNX Scientific Award to Mr. Nils Ulrich Eckardt of the University of Dortmund.

From left to right: Joost Demarest, Dr. Peter Penczynski (both Konnex) and Nils Ulrich Eckhardt (University Dortmund).





State-of-the Art Management

KNX/EIB serves pharmaceutical research

The fifth successive KNX award was presented by the Konnex Association at this year's Light & Building, the trade fair for architecture and building system technology. The first prize was awarded to Guido Claessens, Egemin Group, Antwerp, and to Peter Dockx of the Van Looy Group, Antwerp, respectively the project manager and the project engineer of the KNX/EIB installation at the research centre of the Belgian pharmaceutical company Janssen. .

A new "Discovery Research Center" (DRC) was erected at Janssen's Beerse site with the aim of introducing new methods for greater efficiency in research. This required the use of new, flexible facilities and new building standards.

KNX/EIB fulfils these requirements

In order to be able to meet the demanding requirements, a number of different systems solutions were compared. KNX/EIB was deemed to be the best system in terms of performance, value for money, user friendliness and standardisation.

KNX/EIB was used to realize the following functions:

- Individual room control for offices and conference rooms
- Lighting control for offices, conference rooms, and various laboratories
- Automatic lighting control for research laboratories
- Lighting control in engineering rooms, by means of binary inputs with IP5X buttons
- Lighting control in rest rooms
- Emergency lighting with integrated KNX/EIB BCU's
- KNX/EIB nodes serving as KNX/LAN interface.

The Award Jury particularly praised the innovative use of KNX/EIB in research laboratories for such purposes as temperature regulation, automatic lighting control, emergency lighting with KNX/EIB, and integra-

tion into a building management system.

Temperature regulation

A timer switch and presence detectors in the offices and conference rooms automatically control the mode in which the temperature regulators operate:

- 1. Night:** The temperature is reduced by 4 °C
 - 2. Standby:** reduction by 2°C during working hours when the presence detector signals that the room is empty
 - 3. Comfort:** when the presence detector detects persons in the room during working hours.
- In the conference rooms, the presence detector also activates and deactivates ventilation.



The new research centre of the Janssen pharmaceutical company in Belgium.

Photograph: Van Looy

Egemin Group

One of the world's leading companies in automation, the Egemin Group offers consultancy, implementation and service for the entire production chain. The solutions combine own hardware and software products with products sourced elsewhere.

Further information:

Egemin NV,
Guido Claessens
Baarbeek 1,
B-2070 Antwerpen,
Tel. +32 3 6411212,
www.egemin.be

Van Looy Group

A leading company offering consultancy, engineering, project management and execution, with over 20 years of planning and installation experience in such areas as laboratory buildings, clean-room installations and research centres.

Further information:

Van Looy Group nv,
Peter Dockx
Noordersingel 19,
B-2140 Antwerpen,
Tel. +32 3 2353508,
www.vanlooy.com

Laboratory lighting

Merten Tracent glass push-buttons with 2x4 buttons and display were installed for controlling the laboratory lighting. With their smooth surfaces, these push-buttons allow a hygienic operation. For the lighting control in the laboratories the following additional equipment was installed: sensors for light measurement, dimmer actuators, switch actuators, KNX/EIB controllers with OPC server, software functional blocks as well as an interface to the TCP/IP network. This gateway connects the KNX/EIB installation to the Integrated Management System (IMS).

Special details

In order to simulate natural lighting conditions for the animals in the laboratory, the brightness is increased or reduced according to the conditions determined by a cycle, the parameters of which can be modified. The brightness can be increased manually to 500 lux when work is in progress. Upon completion of the work brightness is reset either manually or automatically. A light warns staff that a test is in progress before they enter the laboratory. The colour of the light can also be modified.

The values for temperature, moisture, pressure and the number of the active cycle are indicated on the display. Light sensors constantly measure the lighting level and log it on the IMS. Should impermissible values be reached, an alarm text appears on the display. This text can be acknowledged.

This ensures that the tests will not be disturbed and the results will be valid.

Complete Integrated system

Bi-directional communication is implemented between the KNX/EIB network and the SPS. The KNX/EIB clock is synchronized with that of the IMS. Higher-level communication runs entirely over Ethernet via TCP/IP. The interface between KNX/EIB and the TCP/IP network is provided by Stagoel Electro "KNX/EIB nodes", which also implement an OPC server. The interfaces also support functions such as comparator blocks, timer functions and network monitoring.

Experienced experts

The major part of the installed KNX/EIB components were supplied by the company Merten. With reliable and robust sensors and actuators and



Photograph: Messe Frankfurt

The prizewinners Guido Claessens, of Egemin, and Peter Dockx, of Van Looy, Belgium (top) had cause for celebration. The second prize went to Nick Gliatis of GDS, Greece.



The 1st Prize

the facility to interface through gateways to a TCP/IP network, KNX/EIB can be used in highly robust and cost-effective building management systems. This however requires a lot of experience in system integration, as proven by Egemin and Van Looy, the winners of the KNX 2004 award. ■

Olympic Dimensions

Buildings systems management at Greece's largest shoe manufacturer

The second prize was awarded to one of the largest electrical installations using KNX/EIB in Greece. In the Athens head office and the 43 sales outlets of the major shoe manufacturer Lemonis, the European standard is used for efficient building management, it enhances comfort for customers and staff and guarantees a high level of security. The prize was awarded to the system integrator Nick Gliatis from GDS, Digital System Design and Application, Building Control, Athens.

The award-winning project distinguishes itself by the linking of all technical functions through Internet gateways in the company's head offices and sales outlets.

Room and building systems automation

In the head offices, the lighting is controlled by movement or presence detectors, in some cases even with continuous light control. The shutters in the offices are automatically controlled. The ventilation and airconditioning are controlled according to the temperature and working hours. 3-fold or 5-fold push-buttons with tem-

perature sensors and IR receivers are installed for manual operation. The roof-mounted heat pumps, controlled by a "LOGO!" mini PLC with KNX/EIB interface, are also integrated into the system as a whole. In the presentation rooms, KNX/EIB controls the me-

dia functions as well as the partition walls. In the sales outlets, light scenes are programmed for the shop-windows, which can be called via an information display. Automatic awnings protect the displayed merchandise from the Greek sun.

Security facilities

The access control systems, realized with badge or fingerprint recognition as well as the video camera monitoring in the retail outlets are incorporated into the central surveillance system via KNX/EIB. Even anti-intrusion relies entirely on KNX-Information from the

a management software application for visualisation, alarm handling, trend logging, history, data archiving, etc. SCADA signals critical events and error messages, and logs all messages. The energy consumption is also recorded for the generation of consumption statistics. This measure has enabled energy savings of up to 25%. The main benefit of networking is however the efficient management of buildings services.

Extension planned

As Lemonis' experience with KNX/EIB installations has been very positive,

"Smart" lighting control is particularly important in the retail outlets. The outlets are also monitored by video cameras.

GDS - Greece's leading EIB/KNX specialist

- Founded in 1999 in Athens by Nick Gliatis
- Specialized in buildings systems automation
- Over 180 EIB/KNX installations implemented: museums, hotels, hospitals, private buildings.

Further information:

GDS, Nick Gliatis
Tel. +30 2108071288
E-mail: gliatis@ath.forthnet.gr



perature sensors and IR receivers are installed for manual operation. The roof-mounted heat pumps, controlled by a "LOGO!" mini PLC with KNX/EIB interface, are also integrated into the system as a whole. In the presentation rooms, KNX/EIB controls the me-

fire warning system is relayed to the KNX network via a gateway.

Efficient management

A "SCADA" (Supervisory Control and Data Acquisition) system is employed for central surveillance. SCADA is

nothing stands in the way for a further extension of the system, e.g. to the factory building. As a competent system integrator, GDS will develop further ingenious solutions for this purpose. ■

ETS 3 Licensing

Obtaining Software via License Key

EIBA has introduced a new licensing system for ETS 3. Instead of acquiring a license in the conventional way – by purchasing the software – you can now order a license key for the software package you desire from EIBA. The CD-ROM containing the ETS 3 software will then be delivered to you free of charge.



The following software packages are available to the user:

- ETS 3 Tester: gives you an opportunity to try out the ETS 3 Starter without incurring licensing fees
- ETS 3 Starter: enables you to easily configure standard functions for small KNX/EIB projects
- ETS 3 Professional: a successor tool to the ETS2 that offers you design, configuration and error-diagnosis functions relating to KNX/EIB projects.

Licensing Procedure

Once you have installed the ETS 3 Starter or Professional, you can re-

quest an official license from EIBA via the Help and Licensing menus. Make sure to enter the corresponding information in the dialog: if you have been working with the ETS 2, fill in your existing ETS 2 licensing number as well as all the other data.

Note, that this license request is for the PC on which the ETS 3 Software has been installed on.

Send the resulting License Request to EIBA by e-mail, fax or mail. You will then promptly receive a temporary license key that you can import via the same Help and Licensing menus. You will also receive a pro forma invoice for the corresponding payment.



Further information can be obtained from www.ets3.com.

Once EIBA has received this payment, it will send you the final invoice including the license for unrestricted user access. ■

Setting A New Milestone

CENELEC ratifies new set of standards on Home & Building Electronic Systems (HBES)

A new milestone was set for European Standardization on Home and Building Electronic Systems, when CENELEC officially ratified a new set of standard parts of the EN 50090 standard series.



CENELEC

Based in Brussels, Belgium, the European Committee for Electrotechnical Standardization (CENELEC) is officially responsible for standardization in the electrotechnical field. Its members have been working together in the interests of European harmonization since the 1950s, creating both voluntary and harmonized standards which have helped to shape the

European Internal Market. CENELEC works with 35,000 technical experts from 28 European countries. Its work directly increases market potential, encourages technological development and guarantees the safety and health of consumers.

Further information
cenelec.org

The basis for this achievement was laid down in June 2000 when CENELEC and Konnex Association signed a Cooperation Agreement for which Konnex committed itself to advise on and submit inputs regarding HBES. In this sense, Konnex submitted the necessary input for the following additional parts of EN 50090 at the end of 2001:

- EN 50090-3-2: User process for HBES Class 1
- EN 50090-4-1: Application layer for HBES Class 1
- EN 50090-4-2: Transport & network layers, and general parts of data link layer for HBES Class 1
- EN 50090-7-1: Management Procedures
- EN 50090-5-2: Network based on HBES Class 1, Twisted Pair.

After a positive vote within CENELEC TC 205 in June 2003 and the latter ratification by the CENELEC Technical Board, these new parts have been fully ratified and set for announcement and publication in the shortest delay.

“One of the major objectives of Konnex Association, as laid down in its founding statutes, has herewith been met”, said Konnex Association President, Mr. Penczynski. “Konnex will however continue submitting contributions to CENELEC and will therefore draft proposals to standardize an HBES radio frequency solution as well as an interworking model, the latter being vital for the success of HBES in intelligent homes and buildings”, Peter Penczynski continued. CENELEC Director General, Mrs. Elena Santiago confirmed this statement and underlined Konnex’ role as a vital partner for standardization of HBES, also in the light of the now ongoing vote on EN 50090-5-1 “Power lines for HBES Class 1” and the Smart House initiative. ■



Domestic Appliances under Control

Miele@home InfoControl: powerline in combination with RF transmission

The "smart house" is increasingly becoming a reality with features like increased comfort, enhanced safety and a range of services. Miele is now making an interesting contribution in this area in the form of the InfoControl information system.

InfoControl is an element within Miele@home, the system for the networked home. The mobile display unit informs its user on the status of all connected Miele domestic appliances and prompts for intervention when necessary. This may take the form of a message that the washing machine programme has been completed, or an instruction to turn the roast in the oven. In case of a fault event, for example a deep-freeze door left open, InfoControl provides an immediate signal, visually and, if desired, also acoustically.

Regardless whether the washing machine in the cellar, the deep-freeze in the utility room or the oven in the kitchen: all Miele appliances can be monitored by means of InfoControl. This makes life easier for the user and is particularly a great help for the handicapped or older people who are less physically fit.



Working undisturbed in the garden whilst keeping an eye on the appliances in the house: now a reality, with Miele@home InfoControl.

Setting up InfoControl is straightforward by means of Plug & Play

Miele's new InfoControl is a further development of the mobile display unit it introduced in 1996. The first-generation InfoControl was however driven directly by the individual appliances, i.e. each Miele appliance involved had its own transmitter and transmitted its data to the receiver by RF signal.

A base station measuring 7 x 14 centimetres, which can be plugged into a suitable domestic power socket now does away with the extensive RF traffic. The domestic appliances use Powerline technology to transmit their data to this base station. An RF link connects the base station and the InfoControl, with its compact and therefore practical dimensions of 5.5 x 6.5 cm.

Miele@home InfoControl consists of a base station and a mobile receiver.

Flexible Room Automation

Room controller delivers decentral KNX/EIB/EIB functionality

ABB's new KNX/EIB room controller provides system integrators with a distributed installation concept for KNX/EIB systems in commercial, industrial and administrative buildings. The RC/A 8.1 consists of an AP enclosure with IP 54 ingress protection and can be fitted with up to eight modules, such as switching, shutter blind and dimmer actuators and binary inputs. The modules can be used to drive loads or connect conventional push buttons. A basic unit controls the functions of the modules and

constitutes the actual KNX/EIB bus coupler.

Fitting could not be easier: once plugged in, the modules are detected automatically, and are wired through a plug-and-socket connector. A manual control facility can be used to test proper operation during commissioning and maintenance. An ETS application is available for programming.

With an overall height of 50 mm, the new KNX/EIB room controller is ideally suited to installation under floors or in false ceilings.



The new room controller in an AP enclosure.



Fotos: ABB

Modular concept for flexible installation.

Further information:

ABB STOTZ-KONTAKT GmbH

Eppelheimer Strasse 82

D-69123 Heidelberg

Internet: www.abb.com

Now the Bus Calls the Tune

The AM 840 audio actuator permits central control of the HiFi system

Arguments in favour of an electrical installation with KNX/EIB are plentiful. One of these is the integration of the HiFi system into the central building services management system.

The new AM 840 audio actuator from WHD, Wilhelm Huber + Söhne, Deisslingen, enables the audio source from the available HiFi system to be selected via the KNX/EIB bus and even the volume and tone to be adjusted – separately for each room. For this purpose, the individual components of the existing stereo system are connected to the "PREAMP 600" channel preamplifier. Six mono or three stereo audio sources can be connected. A microphone can be connected to input 6 if desired. Each input is equipped with a sensitivity control and an over-modulation LED.

The "PREAMP 600" amplifies the signals to make them resistant to interference

The outputs are connected to the inputs of the AM 840 audio actuator, which is fitted onto the DIN mounting rail in the distribution board. The AM 840 offers eight mono or four stereo



Photograph: WHD

A further argument in favour of KNX/EIB: use of the WHD audio actuator to control the HiFi system.

inputs, which can be distributed independently over four mono or two stereo outputs. Several AMP 10 DC amplifiers can be connected to each output. Each AM 840 can thus be used to supply sound independently to four zones in mono or two zones in stereo. Should further zones be required, the AM 840 can also be cascaded.

The amplifiers fit into standard switch boxes, thus ensuring their perfect integration into standard switchgear product ranges. WHD also offers a range of loudspeaker types pre-equipped with suitable amplifiers. The amplifiers can be wired and installed together with the loudspeakers in this case.

Zone announcements are a particularly interesting feature. With a microphone connected to the "PREAMP 600" and a standard KNX/EIB push button sensor, an announcement can be made to any desired zone or zones. ■

Further information:

Wilhelm Huber + Söhne GmbH + Co. KG,
Bismarckstrasse 19
D-78652 Deisslingen
Tel: 49 (0) 7420 889-0
Fax: 49 (0) 7420 889-51
E-mail: info@whd.de
Internet: www.whd.de



Photograph: Theben

Theben's new KNX/EIB weather station is unique in measuring and processing all weather variables and offers these functions within a single enclosure.

Weather Station with Teach-in Object

New combination unit from Theben measures wind speed, rainfall, outdoor brightness and temperature

Theben AG in Haigerloch, manufacturer of components for time switching and individual room control, has extended its range of KNX/EIB components. The new products include a versatile weather station.

The attractive KNX/EIB weather station is ideally suited for the control of sunshade systems, for example in commercial premises, winter gardens and private dwellings.

The combination unit measures wind speed, rainfall, outdoor bright-

Room Automation with Presence Detector

Flexible integration with the new HTS "compact office EIB"

Presence detectors are increasingly used to control room functions. The new "compact office /EIB" from HTS, High Technology Systems AG, in Effretikon (Switzerland) is a suitable product for this purpose. The KNX/EIB presence detector controls up to two light groups and can be used both for switching in function of natural light levels and for continuous light control.

The "Presence" output object can also drive HVAC applications. The "Surveillance" object, which can also drive control rooms, assumes the security function.

Among the useful features is a square detection field, which permits full-cover presence detection within the room. Its "self-learning intelligence" enables the product to be used for example for continuous light control in offices, in "stand-by circuits" in corridors or for the control of lighting and ventilation in lavatories.

The ETS is used for configuration: the proven fully and semi-automatic modes and "master-slave" combinations offer maximum flexibility and straightforward parameterisation. The

system integrator also benefits from the Quickset service remote control for rapid identification of the correct brightness value and for use as a "remote programming button". KNX/EIB buttons and remote controls can also be used for selective dimming, calling of light scenes or control of shutter blinds.

The benefits in a nutshell

- **Two "light" outputs**
 1. Switching or continuous light control
 2. Fully or semi-automatic lighting control
 3. Integrated scene module with two scenes
- **"Presence" output**
 1. Delayed On and Off
 2. "Surveillance" output for room surveillance
 3. "Brightness" output for visualization purposes
 4. Multiple presence detectors can be connected in parallel without logic modules
 5. "QuickSet" service remote control, "Clic" user remote control. ■



Photograph: HTS

The new "compact office KNX/EIB" from HTS is a mature system for modern room automation.

Further information:

HTS High Technology Systems AG,
Im Langhag 11,
CH 8307 Effretikon
Tel. +41(0)52-355 1700
Fax +41(0)52-355 1701
E-mail: info@hts.ch,
Internet: www.hts.ch

ness and temperature. Since these values are all measured directly at the sensor, no further cables or devices in the distribution board are required. Three sunshade channels, for example for three building faces, are available. In conjunction with shutter blind actuators such as the Theben JMG 4, these sunshade channels can be used for fully automatic control of shutter blinds or awnings.

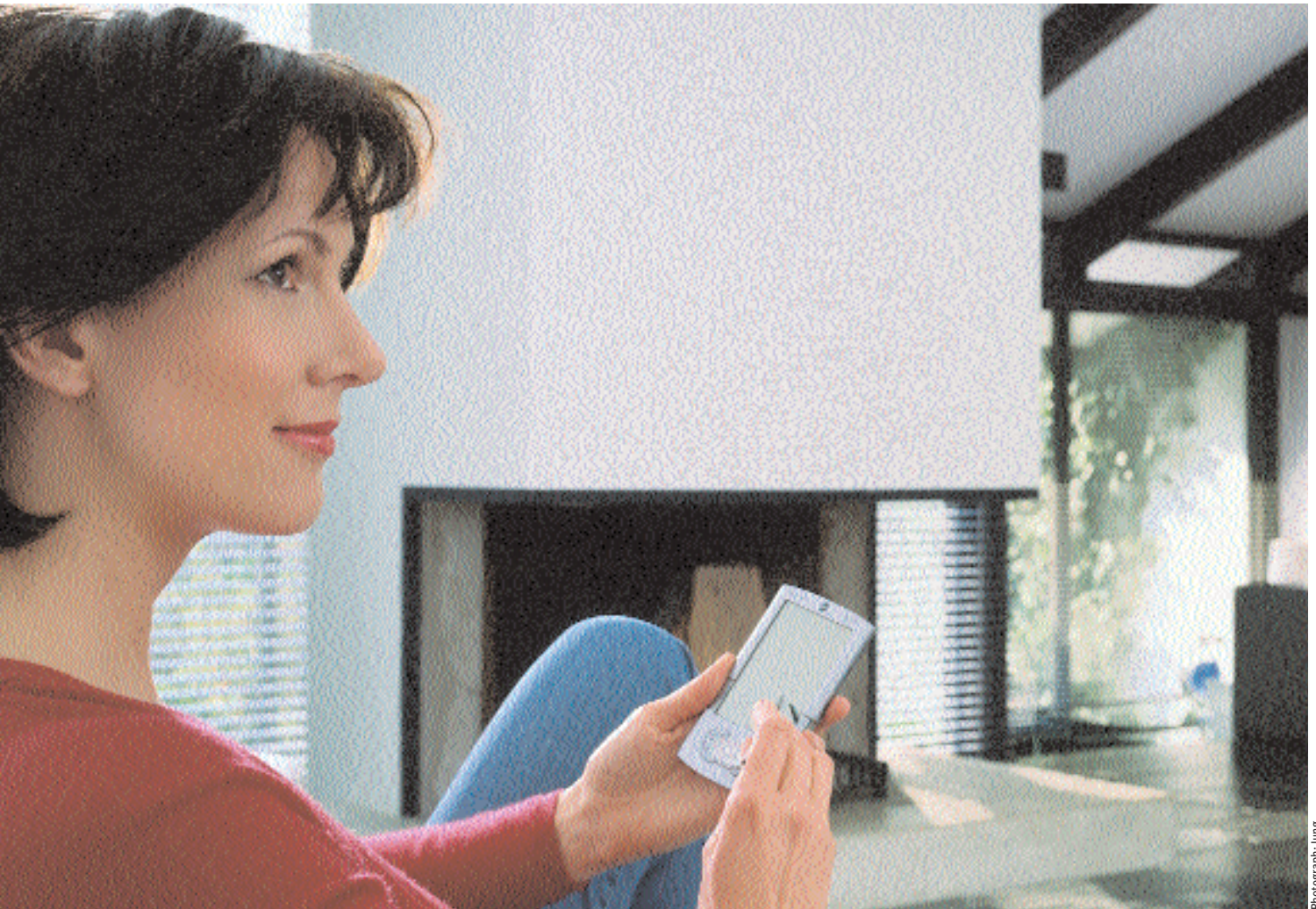
Four further universal channels cater for a range of applications. The measured values can be transmitted directly over the bus. The teach-in object for the outdoor brightness threshold is very user-friendly. This feature enables the customer to define the thresholds retrospectively at the touch of a button, without having to assign new parameters on the weather station. ■

Further information:

Theben AG
Postfach 56
D-72394 Haigerloch
Tel: +49(0)7474/692-0
Fax: +49(0)7474/692-150
E-mail: info@theben.de
www.theben.de

Modern User Control Philosophy

Jung's KNX/EIB Bluetooth gateway is on the button



Photograph: Jung

A new KNX/EIB Bluetooth gateway from Jung permits convenient control of buildings systems with the aid of a PDA.

The availability of modern applications offering greater convenience is an important factor in the marketing of high-quality electrical technology for residential buildings. Handheld computers and mobile telephones are all the rage and offer the perfect means for controlling a KNX/EIB installation. Albrecht Jung in Schalksmühle recently launched a Bluetooth gateway, which permits the control of all services in a building, for example using the PDA Tungsten T3.

The KNX/EIB Bluetooth gateway, which externally resembles the familiar Jung information display, can be used

to control up to eight devices. Settings can be selected in a plain-text menu on the integrated display by means of the four buttons. Users are thus free to implement future changes in use and incorporate new devices themselves later on.

The PDA or other devices equipped with a Bluetooth interface are used for actual control of the systems: switching, dimming, control of shutter blinds, saving and calling up of light scenes, time and date display and even control of HVAC systems.

The new Bluetooth gateway will promote acceptance of KNX/EIB in

the domestic sector. The system installer's arguments for recommending KNX/EIB technology to the end customer begin with the system's user-friendly operating interface. A further benefit is the speed with which the Bluetooth gateway can be installed and programmed. ■

Further information:

Albrecht Jung GmbH CO. KG

D-58579 Schalksmühle

Tel: +49(0)2355806-0

Fax: +49(0)2355806-189

E-mail: mail.info@jung.de

Internet: www.jung.de

The Pocket Service Tool

ElsBärchen software and pocket PC: a cost-effective combination

Eberbach-based Alexander Maier GmbH has developed a service tool for KNX/EIB installations, which runs on the Pocket PC. With this development the company, a buildings systems service provider, is meeting a need it has encountered in its own day-to-day activities. The new "ElsBärchen V 1.0" tool can be used to complete commissioning, troubleshooting and other service tasks more flexibly, easily, and cost-effectively than by means of ETS running on a separate laptop.

The features of the new product are:

- Bus monitor (long-time logging over hours/days/weeks; filter function)
- Programming of physical addresses (address assignment as in the ETS)
- Message transmission (1 bit to 14 bytes; two/three-level group address selectable)

- Control of programming LEDs (LED on/off/flashing, status readout)
- Poll line for KNX/EIB devices (with display of the mask version)
- Read out local BCU (physical address and serial number)
- List KNX/EIB devices with programming button pressed (search function)
- System check (import devices from the ETS and check status).

The minimum hardware requirements are as follows: Pocket PC with 8 MB free RAM, 200 MHz processor, Microsoft Pocket PC 2002/2003, serial sync cable, KNX/EIB RS 232 with FT 1.2 protocol. ■

Further information:

Alexander Maier GmbH
Gebäudesystemtechnik
König-Heinrich-Strasse 45-47
D-69412 Eberbach
Tel: +49 6271 919470
Fax: +49 6271 919479
Internet: www.busbaer.de

Photograph: Maier



The ElsBärchen service tool is available separately as software and adapter or together with a Pocket PC iPAQ1930.

KNX Configuration Made Easy

The new KNX-based Tebis generation

Tebis TS, the electrical installation system from Hager, which has been appreciated by so many European installers over the years, has now been upgraded and extended with a

range of new devices and a wireless configuration tool; TX100, to meet even better the market requirements.

Thanks to the radio connection of the new configuration tool, the installer can connect with Tebis from anywhere in the building. In this way he can update or check links and parameters according to the customer's wishes.

In home and small commercial area projects, the TX100 configuration tool can be used to configure all necessary devices and link required functions. For that reason it is the ideal tool for installers wishing to take their first steps in the world of KNX.

With some simple operations as a first step a sensor (push-button, switch, clock, presence detector...) is chosen. As a second step this sensor is linked to one or more outputs (lighting, blinds, shutter, heating,...). After confirmation of the link between sensor and output, the specific parameters for this link are added (switch on duration, scenario number,...).

The wireless configuration tool also has a so-called «Expert» mode, meant for those in-

stallers who wish to access the KNX network via group communication.

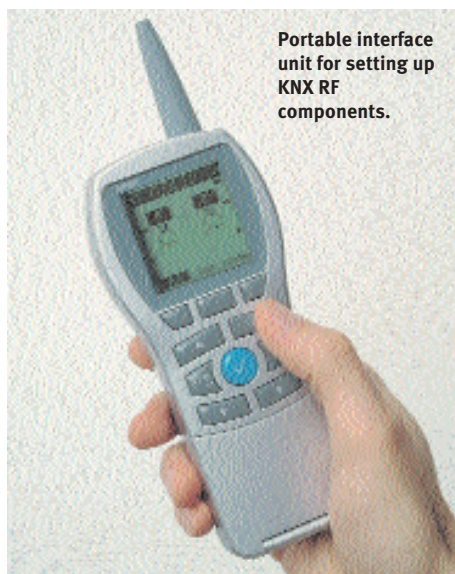
The configuration can be done room by room and allows immediate checking of each link when programmed.

With the TX100 configuration tool it is possible to configure all devices of the Tebis range, regardless whether wired or wireless. For the devices with radio communication, the configuration tool also includes test software to measure the ambient noise, the traffic on the wireless medium and the sending and receiving signal levels. These tools provide the installer with the best means to enter the wireless communication environment.

All configuration data is stored on the memory-card of the tool. For easy access, the data can be archived on PC too, in order to guarantee a perfect installation corresponding to your customer's wishes. ■

Further information:

Hager Tehalit Vertriebs GmbH
Zum Gunterstal
D-66440 Blieskastel
Tel: +49 (0) 6842 945-0
Internet: www.hager-tehalit.de



Portable interface unit for setting up KNX RF components.

Photograph: Hager

European Competition of Young Electricians

Precision and KNX/EIB technology lead the German entrant to victory

From 11 to 13 March 2004, young electricians from nine countries competed in the European championship at the Odense congress centre on Fünen in Denmark. The final winner was Norbert Franke from Germany, who scored a narrow victory over Norway's Bjarte Hoff and Austria's Markus Kapeller to take gold.



Photograph: Niels Poulsen

The winners: Norbert Franke (centre), Bjarte Hoff (left) Markus Kapeller (right). Behind them: Hans Christian Andersen, the town of Odense's most famous son, with the Princess and the Pea.

All nine candidates had qualified for the competition in local run-offs or had been chosen specially according to criteria such as precision in their work and technical skill. A particularly stress-inducing factor in these competitions, which are held every two years, is the frequently unfamiliar construction of typical components from the host country, which have to be used during the contest.

Automated conference room

In this year's competition for Europe's best electrician, the participants were required to design the electrical installation for a high tech conference room. A lighting system consisting of fluorescent and low-voltage lamps and an alarm system also had to be

installed. Requirements were infrared remote control, dimming, automatic switching by means of infrared sensors and light scene control. Room surveillance via infrared sensors furthermore had to trigger an alarm. KNX/EIB components were to be employed and programmed for the automation of the installation. The competitors had 17 hours to complete the task.

Overall impression decisive

The three winners all had their strong points. The Austrian competitor was superior as regards speed during cabling and the use of the screwdriver and cutting pliers. The Norwegian competitor was the second fastest, with superior programming and a

convincing finish. The German winner, however, produced an installation in which all details were executed with great precision, overall planning of the task was well conceived, and order reigned throughout. The overall impression was the deciding factor. The Danish competitor K. Nielsen took fourth place, with only five points less than the winner. The same rating went to the entrants from Portugal, Spain, France, Switzerland and Norway.

Highly qualified craft

The "Competition of Young Electricians" was organized by the Danish electricians' union and the Danish organization Teknik Installatørerne on behalf of the European Association of Electrical Contractors, AIE.

That the tasks facing competitors in the "Competition of Young Electricians" included an automation task involving KNX/EIB is proof of the importance of the European standard and the high skill level in the electrical sector in Europe. ■

The winner in person:

Before winning the European championship, Norbert Franke of Liebenau had also won the guild, regional and German championships. The company responsible for his training is Peter Peiser Elektroanlagen GmbH in Nienburg.

In Line with Konnex

German KNX/EIB User Club presents its new Logo

As in 2002, experts from the EIB User Club Deutschland (EIBUC-D) were on hand on the Konnex Association booth at Light + Building 2004 to discuss KNX/EIB with visitors to the fair. Over five days, volunteer members answered questions on ETS 3, on networking and Internet applications in building systems engineering, on the benefits of a bus installation and of course on the EIBUC-D itself. This time, the users even had a corner of their own, showing the new KNX/EIB User Club logo, which shows great similarity to the Konnex Scientific partnership logo. The link-up came naturally: as Uwe Knüpfer, EIBUC-D says, "We in the EIBUC-D are pleased about our close contacts with the Konnex Association".



Photograph: Hermann Hägele

Numerous discussions among experts: EIBUC-D members on the Konnex Association's booth

Six years ago, around twenty EIB users got together to form an EIB user club. The cause taken up by the club was that of sharing members' experience with EIB. As Knüpfer explains, "competence in a complex and rapidly developing technology such as KNX/EIB is beyond the capability of any single individual." Many members have in the past received crucial help and contacts for business with KNX/EIB through the EIBUC-D. The club now has a membership of around seventy.

Activities all the year round

Konnex Association presented the new ETS 3 at Light+Building. The input of practical experience was also

necessary during development of the tool: "EIBUC-D members engaged in comprehensive discussions with the developers individually, in groups, and at club events, and many of their requests were implemented," says Knüpfer, illustrating the importance of communication in this issue.

Discussion with the experts is also valued by the KNX/EIB manufacturers. The club's activities therefore include factory visits, presentation of technical papers, discussions of solutions, and presentation of interesting projects. A visit to the KNX/EIB installation at the Frauenkirche in Dresden next summer is already planned. A member of the club is namely responsible for this installation.

The largest KNX/EIB forum

The EIBUC-D's web site can claim to be the most frequently visited KNX/EIB forum in the world. Some 15,000 messages on 2,000 topics have now been logged. Beginners, fans and experts all contribute to discussions in the public area of the web site. Knüpfer says: "it is not unusual to find a quicker and more precise answer here than on an expensive hotline." The internal forum is open to members only.

Any legal or natural person with a professional interest in KNX/EIB may become a member. Manufacturers may become sponsoring members. Interested in joining? An application form can be found here: www.eib-userclub.de. Installers can also use the site to find a local system provider for their KNX/EIB jobs. ■



Further information:

EIB-User-Club Deutschland e. V.

D-72124 Pliezhausen

www.eib-userclub.de



Marketing Department

Harry Crijns
Director Marketing & Communication
harry.crijns@konnex.org



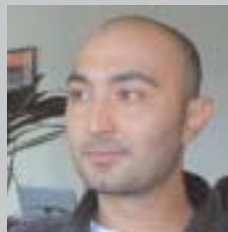
Marketing Department

Wouter van den Bos
Manager Marketing & Communication
w.vandenbos@eiba.com



Certification and Administration

Joost Demarest
Director Certification & Administration
joost.demarest@konnex.org



Certification and Administration

Ufuk Unal
Assistant Certification
ufuk.unal@konnex.org



System & Software Department

Marc Goossens
Director System & Software Department ETS
m.goossens@eiba.com



System & Software Department

Steven de Bruyne
System Engineer KNX Standard
steven.debruyne@konnex.org



System & Software Department

Christophe Parthoens
System Engineer ETS & KNX Standard
c.parthoens@eiba.com



System & Software Department

Chantal Degol
Sales & Logistics Software
c.degol@eiba.com



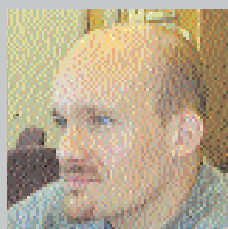
System & Software Department

Serge Creola
Assistant to Software & Marketing Department
s.creola@eiba.com



Administration

Hazel Johnson
Secretary of the Association
hazel.johnson@konnex.org



System & Software Department

Ruben Goethals
System Engineer ETS
r.goethals@eiba.com

KONNEX-journal



Publisher:

Konnex Association
Bessenveldstraat 5
B-1831 Diegem, Belgium
Phone: +32 (2) 7 75 85 90
Fax: +32 (2) 6 75 50 28
E-Mail: info@konnex.org
www.konnex.org

Publishing House:

Publicis Kommunikations-Agentur GmbH, GWA
Corporate Publishing Zeitschriften
91050 Erlangen, Germany

Cover Photo:

Deutsche EIB/KNX-Gruppe

Print:

CS-Vertrieb, Heilsbronn

Circulation:

6.000

©2004 by Konnex Association
Printed in Germany