

# N 523/04

## Venetian blind actuator

### 4x AC 230V, 6A

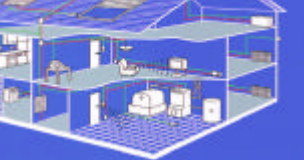
### (with analogue control)

**Eng. (Univ.) Axel Grossmann**  
Manager Training

A&D ET S CSC  
Siemensstr. 10  
93055 Regensburg

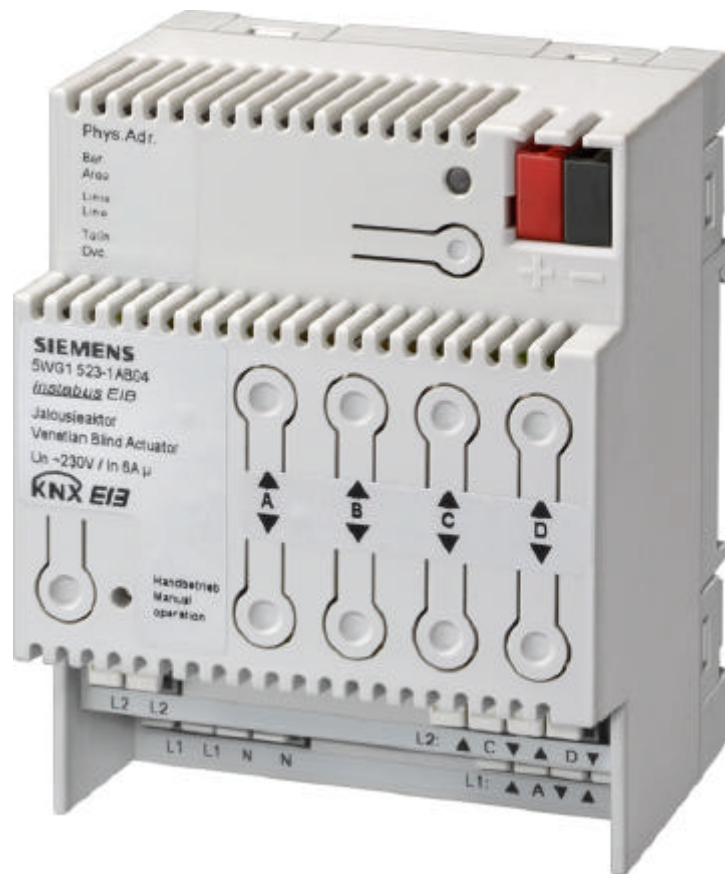
Tel.: 0941/790-2952  
Axel.grossmann@siemens.com



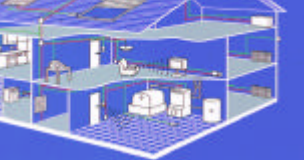


Electrical Installation  
from A to Z

# Venetian blind actuator N 523/04

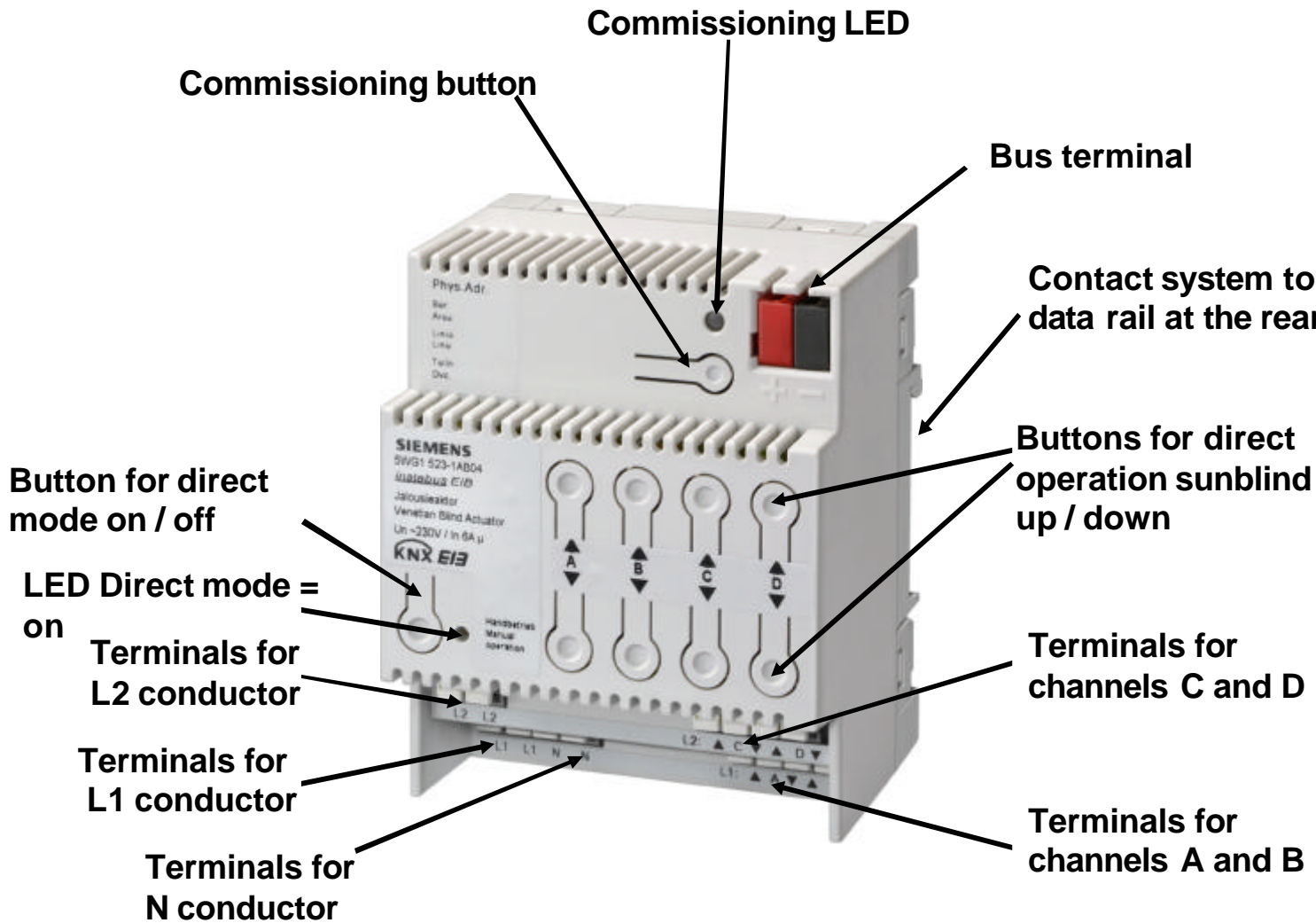


List price 294 €

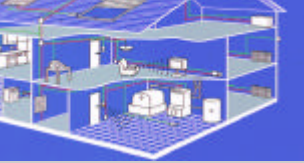


# Display and operating elements N 523/04

Electrical Installation  
from A to Z



$S = V = N \cdot S$

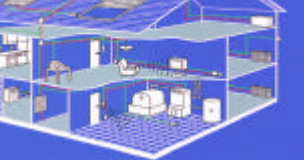


# Venetian blind actuator N 523/04

## Technical data hardware



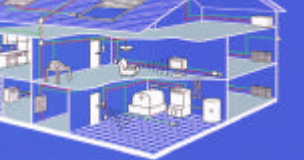
- N 523/02 with extended memory space to obtain more features
- 4 channels (8 relay outputs), each of them designed to interface one sunblind drive either with electromechanical or electronic limit switches
- Relay contacts rated for AC 230 V, 6 A (resistive load)
- Mains terminals for looping through the L and N conductors (2 x N, 2 x L1 for channels A + B, 2 x L2 for channels C + D)
- Channels C + D may be connected to a L-conductor different from that for channels A + B
- Actuator-Electronics operated by an integrated 230 V PSU, therefore only half standard busload (5 mA)
- 2 buttons per channel for direct operation, also if not yet parametrized
- DIN rail mounted device, 4 SU, EIB/KNX-terminal on front, data rail contacts on rear



Electrical Installation  
from A to Z

# Venetian blind actuator N523/04, Software functions (1)

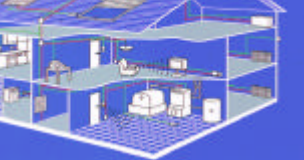
- **General settings:**
- 4 Channels / 2 + 2 channels in groups, or each one individually parametrizable, therefore time saving, if all channels are identical
- **Common alarm object** (e.g. windalarm) for all channels, **or individual ones**
- **Common channel blocking object**, **or individually** for each channel
- **Only one mode of operation** (standard mode) **or bivalent** between **automatic and manual mode** (e.g. necessary if there is an automatic sunblind control device which should be overcontrolled by the user)
- In automatic mode: **one object „Sun“** per device or one per channel **(if used with a shutter control unit for tracking of the sun's position)**



# Venetian blind actuator N523/04, Software functions (2)



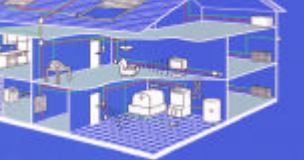
- **Always available per channel:** two 1bit objects for moving up/down a sunblind and for stopping the movement resp. for a stepwise positioning of the slats.
- **Additionally: 2 analogue objects (8-bit)** for **position direct control** only in automatic mode or in standard mode, too.
- **Additionally: 2 status objects** (status sunblind position and status slat position in %) available per channel
- **Additionally: object „Status upper end position“** and / or **„Status lower end position“** is available per channel
- **Per channel: 2 travel timers** „up to down“ position and „down to up“ position (needed for exact calculation of the current position of the sunblind)
- **Parametrizable: Re-opening slats** after having reached the down end position to a preset position (only active after an uninterrupted travel from final up to final down position)



# Venetian blind actuator N523/04, Software functions (3)



- **Object „Central control in automatic mode“ Channel A-D, Auto=On + centrally up/down (in use with a weather station)**
- **Via this object all actuator channels are firstly forced into the automatic mode and then moved to the given final position (this function guarantees that all sunblinds on one facade can be moved into a synchronized position )**
- **Per channel it can be set by a parameter if it is controlled by this object or not (it mustn't be used e.g. in case of an interior sunblind used for darkening)**
- **Via object „Channels A-D, centrally up/down only if auto=on“ the sunprotection is only moved to end position if automatic mode is on; thus it is ensured that manually controlled channels remain in position**



# Comparison of 4-fold Venetian blind actuators with manual override operation

List price



**N 523/02**  
272 €



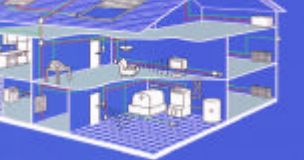
**N 523/04**  
294 €



**N 522/03**  
317 €

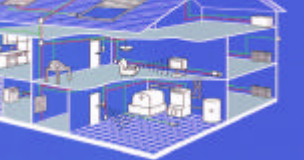


Functionality



## Summary: Characteristics of the N 523/04

- + Upgrade development of the N 523/02 (other micro controller with more memory) in order to offer a low-cost Venetian blind actuator if the positioning of blinds and slats via communication objects with positions as per cent values is specified.
- + Type and number of communication objects selectable a with the N 523/02.
- + Easy and quick commissioning, with selection if the parameter settings shall be the same for all channels or if the parameters of each channel shall be set individually.
- + With special object „Sun On/Off“ for use together with a shutter control unit in projects for sunlight tracking of the slats.



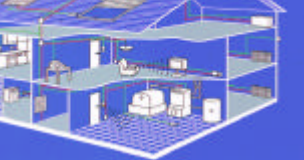
**N 523/04**

**Electrical Installation  
from A to Z**

**Thank you for listening –**

**Are there any questions now ?**

$$S = V \cdot I$$

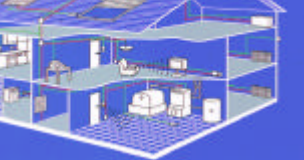


# S 563



**5WG3 563-7AB11**

**Socket Outlet Switch wave/DECT**



# Socket Outlet Switch wave/DECT S 563

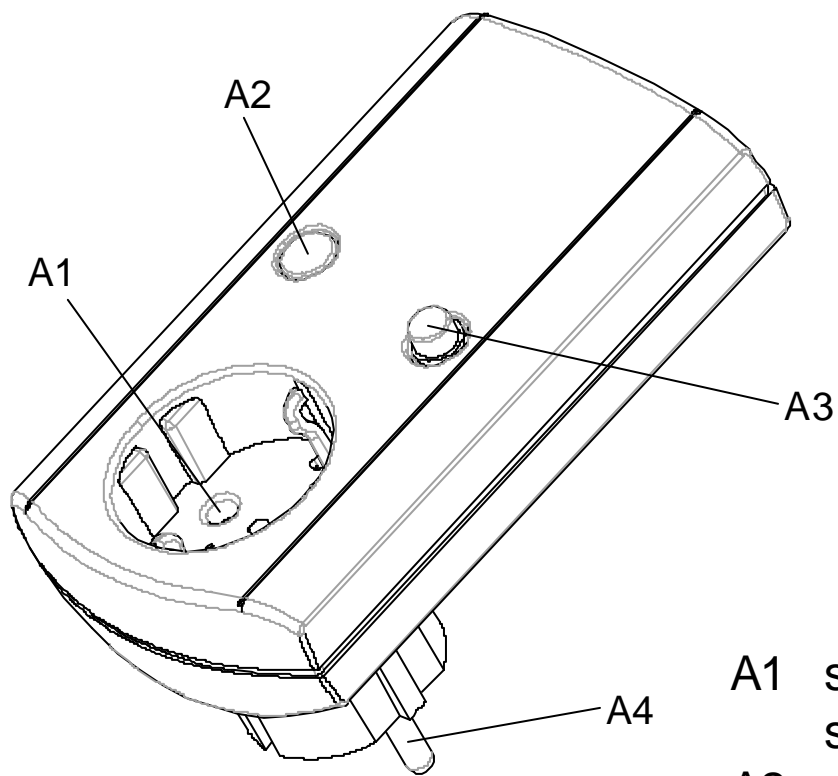
Electrical Installation  
from A to Z

Socket Outlet Switch  
wave S 563

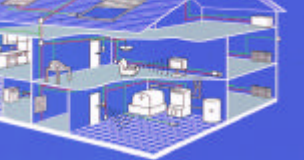
Features

Technical Data

Price



- A1 socket outlet receptacle with side grounding contacts
- A2 red status LED
- A3 push button for local operation
- A4 socket outlet plug with side grounding contacts



Electrical Installation  
from A to Z

Socket Outlet Switch  
Type S 563

Features

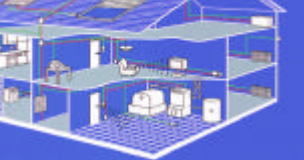
Technical Data

Net Price

# Features

- **push button for local operation of socket outlet**
- **status LED to indicate operation mode**
  
- **remote operation via KNX RF standard**
- **bidirectional device (status is sent at changes)**
- **linkable in up to 16 scenes**

$$S = V \cdot I \cdot t$$



# Technical Data

Electrical Installation  
from A to Z

Socket Outlet Switch  
Type S 563

Features

Technical Data

Price

## ■ Housing

- socket outlet receptacle and plug with side grounding contacts
- dimensions (L x W x D): 128 x 72 x 75 mm (incl. contacts)
- same housing as BETA protection adapter with line filter

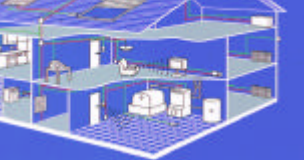
## ■ Integrated Power Supply, 230V AC +10% / -15%

## ■ Breaking Capacity

- socket outlet receptacle and plug connected via relay
- rated voltage: AC 230 V, 50Hz
- rated current: 16 A
- switching cycles: > 20.000  
if used with Incandescent lamps up to 1000W

## ■ Protection Class: IP 20

$S = V \cdot I \cdot t$



# List Price

Electrical Installation  
from A to Z

Socket Outlet Switch  
Type S 563

Features

Technical Data

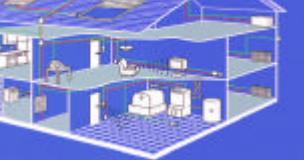
List Price

■ **Order Number**  
**5WG3 563-7AB11**

**Colour**  
**titanium white**

**List price**  
**200,- EUR**

$$S = V \cdot I$$



Electrical Installation  
from A to Z

# Fan-Coil Unit Operator Panels Hotel and Fan-Coil Unit Operator Panels Office

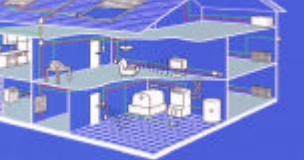
**Dipl.-Ing. (Univ.) Axel Großmann**  
Schulungsleiter

A&D ET S CSC  
Siemensstr. 10  
93055 Regensburg

Tel.: 0941/790-2952  
Axel.grossmann@siemens.com



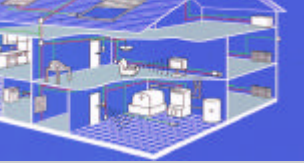
$S = V = NS$



# FCU Operator Panels Hotel



- ❑ Adjustment of the desired fan rotational speed respectively re-adjustment of the automatic control of the fan speed by pressing the pushbutton
- ❑ Display of the current fan speed respectively of the automatic fan speed control via 5 yellow LEDs
- ❑ Display if heating or cooling active via 2 green LEDs
- ❑ Setpoint adjustment of the room temperature in °C via the rotary knob



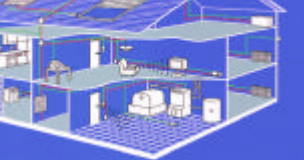
# Advantages, customer benefits

- ✓ **Simply**
- ✓ **Clearly arranged**
- ✓ **Self explanatory**



**A hotel guest will be familiar with operation and display immediately:**

- ❑ **He is able to set the room temperature in °C.**
- ❑ **He may either leave the setting of the fan speed level to the controller or he can set it (and he can even set it to „0“, if he doesn´t like the noise or the air stream).**
- ❑ **He is able to see whether the room is heated or cooled (i.e. if heating and cooling will work).**

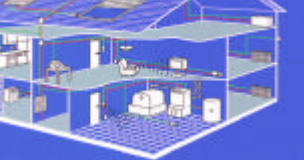


# Advantages, customer benefits



**A hotel guest must not know that the FCU controller differs between comfort mode, energy saving mode and protection mode:**

- ❑ If he operates the pushbutton or the rotary knob, the FCU controller will be switched-over to comfort mode immediately.**
- ❑ Dependent on the behavior at an open window (which has to be set at the FCU controller) the LED for display of heating or cooling mode will be switched off as long as the window remains open.**

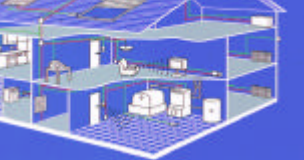


# Comparison with a competing product

Electrical Installation  
from A to Z



- Clearer operation and display.
- Desired room temperature to be set in °C.
- Fan can be switched off.
- No BCU2 needed.



# FCU Operator Panels Hotel

## Designs and Colors:

### DELTA i-system

Titanium white	5WG1 237-2FB11
carbon metallic	5WG1 237-2FB21
aluminium metallic	5WG1 237-2FB31

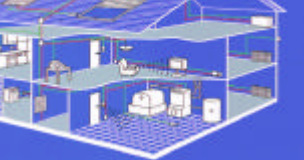
### DELTA profil

Pearl grey	5WG1 252-2FB01
titanium white	5WG1 252-2FB11
anthracite	5WG1 252-2FB21
silver	5WG1 252-2FB71

### DELTA style

Titanium white / metallic silver	5WG1 254-2FB11
basalt black / metallic silver	5WG1 254-2FB21

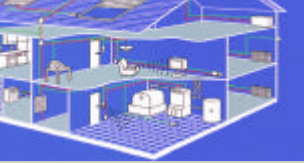
**Note:** The designs DELTA i-system and DELTA profil in titanium white can be delivered from stock; other colors and the design DELTA style upon request.



# FCU Operator Panels Office



- ❑ Toggling between comfort and energy saving mode by short pressing of the pushbutton
- ❑ Adjustment of the desired fan rotational speed respectively re-adjustment of the automatic control of the fan speed by long pressing of the pushbutton
- ❑ Display of the current fan speed respectively of the automatic fan speed control via 5 yellow LEDs
- ❑ Display of the current room operating mode via 3 green LEDs
- ❑ Display if heating or cooling active via a bi-colored LED (red=heating, green=cooling)
- ❑ Setpoint shifting of the room temperature within an adjustable range via the rotary knob

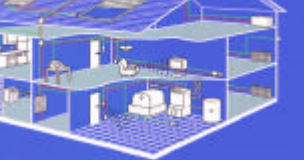


# Advantages, customer benefits

- ✓ **Versatile**
- ✓ **Clearly arranged**
- ✓ **Easily understandable**



- ❑ **Without presence detector: switch-over between comfort mode and energy saving mode by a short operation of the pushbutton, setting of the fan speed level by a long operation.**
- ❑ **With presence detector: setting of the fan speed level by a short (or long) operation of the pushbutton.**
- ❑ **Flashing of the LED for display of the current operation mode as long as a window (with window contact) is open**

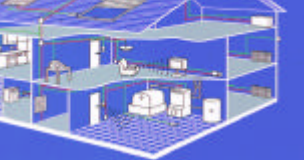


# Comparison with a competing product

Electrical Installation  
from A to Z



- ❑ Clearer operation and display.
- ❑ Fan can be switched off.
- ❑ Additional LED for display of „protection mode“.
- ❑ Signaling of an open window by a flashing LED for operation mode display.
- ❑ No BCU2 needed.



# FCU Operator Panels Office

## Designs and Colors:

### DELTA i-system

Titanium white	5WG1 237-2EB11
carbon metallic	5WG1 237-2EB21
aluminium metallic	5WG1 237-2EB31

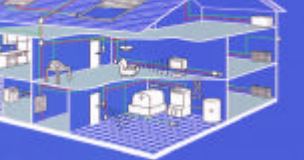
### DELTA profil

Pearl grey	5WG1 252-2EB01
titanium white	5WG1 252-2EB11
anthracite	5WG1 252-2EB21
silver	5WG1 252-2EB71

### DELTA style

Titanium white / metallic silver	5WG1 254-2EB11
basalt black / metallic silver	5WG1 254-2EB21

**Note:** The designs DELTA i-system and DELTA profil in titanium white can be delivered from stock; other colors and the design DELTA style upon request.



# FCU Operator Panels

Thank you for listening !

Do you have questions now ?